

economy
"Self-Drinking"
PLASTIC LABELS

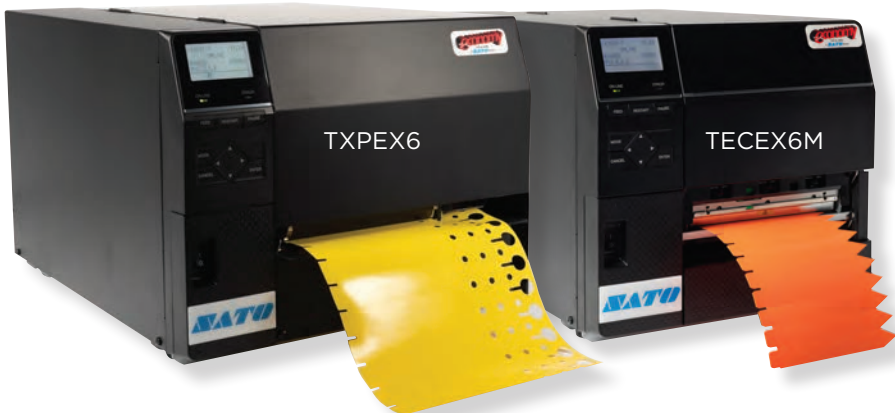
LABELS & TAGS

A **SATO** Brand

2020



HORTICULTURE CATALOG



CLNX
Series



WS4

FROM THE INVENTOR OF THE THERMAL TRANSFER PRINTER
SATO'S HORTICULTURE PRINTER LINE

SATO AUTHORIZED MASTER RESELLERS



OBC Northwest, Inc.

1076 SW Berg Parkway
P.O. Box 759
Canby, OR 97013
(800) 477-4744 or
(503) 266-2021
Fax (503) 266-6837
obc@obcnw.com
www.obcnw.com

Loda Enterprises, Inc.

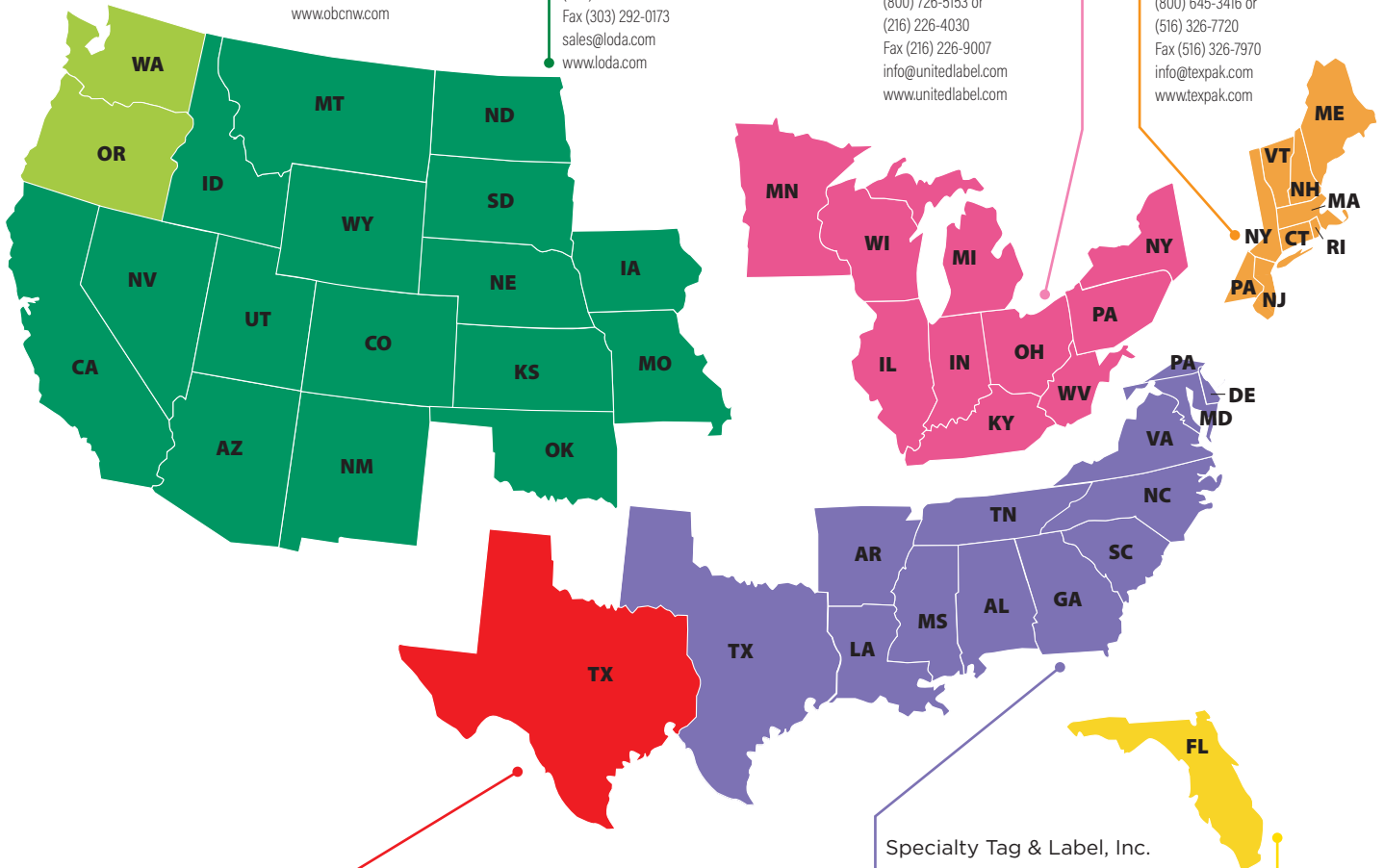
10621 Irma Dr. Unit A
Northglenn, CO 80233
(800) 654-5331 or
(303) 298-1833
Fax (303) 292-0173
sales@loda.com
www.loda.com

United Label & Sales Corporation

12900 Berea Road
Cleveland, OH 44111
(800) 726-5153 or
(216) 226-4030
Fax (216) 226-9007
info@unitedlabel.com
www.unitedlabel.com

Texpak, Inc.

130 New Hyde Park Rd
Franklin Square, NY 11010
(800) 645-3416 or
(516) 326-7720
Fax (516) 326-7970
info@texpak.com
www.texpak.com



Labels Etc., Inc.

700 West Austin Street
Conroe, TX 77301
(800) 346-8191 or
(936) 760-3080
Fax (936) 760-3015
terry@labelsetc.com
www.labelsetc.com

Specialty Tag & Label, Inc.

3963 Falcon Parkway
Flowery Branch, GA 30542
(800) 475-2040 or
(770) 965-0440
Fax (800) 475-7782 or
(770) 965-0474
order@specialtytag.com
www.specialtytag.com

Label It, Inc.

10100 NW 116 Way Suite 1
Miami, FL 33178
(305) 887-4949
Fax (305) 887-3339
sales@label-it.com
www.label-it.com

SATO America, LLC

Horticulture Division • 930 Jimmy Ann Dr. • Daytona Beach, FL 32117 • (800) 874-4465
10350-A Nations Ford Rd • Charlotte, NC 28273
1140 Windham Pkwy • Romeoville, IL 60446
www.satoamerica.com/hort

Table of Contents

THERMAL PRODUCTS

Thermal Printers	2-3
Thermal Transfer Ribbon	4
Thermal Accessories	5
Labeling Software	6-7
RFID Solutions	8
Setup and Custom Printing Charges	9
Thermal Slip-On® Tags	10-11
Thermal Pot Tags	12-13
Thermal Hang Tags	14-15
Thermal Signs	16-17
Thermal Pressure Sensitive Paper Labels	17
Thermal Pressure Sensitive Labels	18-19

NEW PRODUCTS

New Horticulture Products	20-21
---------------------------------	-------

LASER PRODUCTS

Color Laser Slip-On® Tags	22-23
Color Laser Hang Tags	24-25
Color Laser Signs	26
Color Laser Pressure Sensitive Labels	27

RETAIL GARDEN CENTER PRODUCTS/GROWER SUPPLIES

4c Custom Signs	28
Custom Signs	29
Stock Signs	30
Blank Signs	31
Sign Holders	32
T-Stakes	33
Injection Molded Stakes	33
Blackboard Markers	34
Pens	34
Sold Tags	35
ID Tags	35
Slip-On® Ties	35
Tag Guns and Accessories	36

CUSTOM PRINTING

Custom Printing Solutions	37
Custom Picture Tags and Labels	38
Tree Wraps	39
Simply SATO	39



TXPEX6 Thermal Printer

The TXPEX6 is the latest addition to SATO's Horticulture printer line. Designed for the most demanding printing applications, the TXPEX6 easily handles material thicknesses up to 25 mil at speeds up to 12 inches per second. The TXPEX6 is available with a 6-inch (305 dpi) print head and can print tag widths up to 10 inches ladder style (sideways). This print orientation promotes faster throughput and maximizes ribbon usage. The TXPEX6 comes standard with USB 2.0, LAN 10/100 Base, IPv6 and USB Host/RTC interfaces. RFID is an available option.

ITEM	PRINTER	QTY PACK	PRINTER WEIGHT	LIST PRICE	U/M
TXPEX6	●	1	58 LB	\$3,995.00	EA

ITEM	DESCRIPTION	LIST PRICE	U/M
SX1056	Thermal Printer Core Adapter	\$75.00	EA



TECEX6M Thermal Printer

The TECEX6M printer is ideal for tags, labels and signs up to 6 inches wide. Utilizing the End-To-End Slip-On® tags, various pot tags, and pressure sensitive signs, makes this the most versatile and cost-effective printer in the Horticulture market. The TECEX6M is available with a 6-inch (305 dpi) print head and can handle material thickness up to 25 mil at speeds up to 12 inches per second. The TECEX6M comes standard with USB 2.0, LAN 10/100 Base, IPv6 and USB Host/RTC interfaces. RFID is an available option.

ITEM	PRINTER	QTY PACK	PRINTER WEIGHT	LIST PRICE	U/M
TECEX6M	●	1	44 LB	\$3,245.00	EA

Available Spring 2020.

● Prints up to 6" on 6" web (material width). TECEX6M

● Prints up to 6.5" on a 7" web (material width). Fits most SATO printers. Print width may vary.

● Prints up to 6" on a 10" web (material width). TXPEX6

● Prints up to 4" on a 4.5" web (material width). CL4NX - WS4



WS4 Thermal Printer

The WS4 desktop printer is a great complement to our EX model line of printers. The WS4 can print up to 4.09" wide at (203 or 300dpi), up to 6 ips. This printer is designed primarily for thinner gauge materials, such as pressure sensitive adhesive labels, our TT End-to-End Slip-On® tags, and also our ZX pot stakes. The WS4 offers a lower cost addition to help reduce changeover time for customers using different types of media. Optional Argox unwinder (59-C2103-011/\$29.00MSRP)

ITEM	PRINTER	QTY PACK	PRINTER WEIGHT	LIST PRICE	U/M
WS408TT	●	1	5.5 LB	\$575.00	EA

CLNX Series Thermal Printer

A revolutionary industrial class of thermal printers utilizing SATO's innovative user design philosophy featuring an easy to use platform for the most demanding customer application and environments.

Preinstalled operational videos viewed on a full color LED screen make training, setup and operation exceptionally easy. Other product key features include; 60° high lift print mechanism for simplified media and ribbon loading, coreless ribbon take up, multiple on-board interface connectivity, collapsible bi-fold side access cover for tight print locations, Energy Star compliant, available in 4" and 6.5" wide models- IDEAL for tags, RFID tags, labels, and signage. **Call your SATO Authorized Master Reseller for compatible ribbons, tags, labels and additional information.**



ITEM	PRINTER	QTY PACK	PRINTER WEIGHT	LIST PRICE	U/M
CL4NX Plus 4.1" 203 dpi	●	1	33 LB	\$1,695.00	EA
CL4NX Plus 4.1" 305 dpi	●	1	33 LB	\$2,090.00	EA
CL4NX Plus 4.1" 609 dpi	●	1	33 LB	\$3,045.00	EA
CL608NX - 6.5" 203 dpi	●	1	42 LB	\$3,175.00	EA
CL612NX - 6.5" 305 dpi	●	1	42 LB	\$3,670.00	EA

Free NiceLabel edition with limited functionality, exclusively for use with CLNX and WS4 printers. No database support.

● Prints up to 6" on 6" web (material width). TECEX6M

● Prints up to 6.5" on a 7" web (material width). Fits most SATO printers. Print width may vary.

● Prints up to 6" on a 10" web (material width). TXPEX6

● Prints up to 4" on a 4.5" web (material width). CL4NX - WS4

Thermal Transfer Ribbon

ITEM NO.	PRINTER	DESCRIPTION	ROLL/WIDTH	QTY/CASE	WEIGHT/CASE	LIST PRICE	U/M
SR904	● ●	SATO ALL PURPOSE 4" RIBBON 1968' (106mm x 600m)	4"	12	18 LB	\$39.95	RL
SR905	● ●	SATO ALL PURPOSE 5" RIBBON 1968' (130mm x 600m)	5"	12	22 LB	\$47.95	RL
SR906	● ●	SATO ALL PURPOSE 6" RIBBON 1968' (152mm x 600m)	6"	12	26 LB	\$54.95	RL
SR64	●	SATO CG408 Desktop Thermal Ribbon 328' (110mm x 100m)	4"	24	7 LB	\$6.95	RL
SR605(CLRS)	● ●	SATO Color Thermal Ribbon 984' (131mm x 300m)	5"	12	12 LB	\$37.08	RL
SR655MW	● ●	SATO Metallic White Thermal Ribbon 984' (131mm x 300m)	5"	12	12 LB	\$37.08	RL
SR606(CLRS)	● ●	SATO Color Thermal Ribbon 984' (152mm x 300m)	6"	12	15 LB	\$39.95	RL
SR656MW	● ●	SATO Metallic White Thermal Ribbon 984' (152mm x 300m)	6"	12	15 LB	\$39.95	RL
12S000355	●	SATO WS4 Desktop Ribbon 984' (110mm x 300m)	4"	24	18.5 LB	\$13.92	RL
12S000429	● ●	SATO WAX RESIN 1,476' (110mm x 450m)	4.33"	24	27 LB	\$12.06	RL
12S000152	●	SATO WAX RESIN 1,345' (171mm x 410m)	6.75"	25	43 LB	\$49.29	RL



	<p>768 N. Nova Road Daytona Beach, Fla. 32114 Phone: 386-252-2534 Fax: 386-252-3611 BigValueGarden@aol.com www.BigValueGardenCenter.com</p>	<p>BLUE</p>
	<p>768 N. Nova Road Daytona Beach, Fla. 32114 Phone: 386-252-2534 Fax: 386-252-3611 BigValueGarden@aol.com www.BigValueGardenCenter.com</p>	<p>GREEN</p>
	<p>768 N. Nova Road Daytona Beach, Fla. 32114 Phone: 386-252-2534 Fax: 386-252-3611 BigValueGarden@aol.com www.BigValueGardenCenter.com</p>	<p>WHITE</p>
	<p>768 N. Nova Road Daytona Beach, Fla. 32114 Phone: 386-252-2534 Fax: 386-252-3611 BigValueGarden@aol.com www.BigValueGardenCenter.com</p>	<p>RED</p>
	<p>768 N. Nova Road Daytona Beach, Fla. 32114 Phone: 386-252-2534 Fax: 386-252-3611 BigValueGarden@aol.com www.BigValueGardenCenter.com</p>	<p>METALIC WHITE</p>

PRINTER LEGEND

● Prints up to 6" on 6" web (material width). TECEX6M

● Prints up to 6.5" on a 7" web (material width). Fits most SATO printers. Print width may vary.

● Prints up to 6" on a 10" web (material width). TXPEX6

● Prints up to 4" on a 4.5" web (material width). CL4NX - WS4

Thermal Printheads

ITEM NO.	QTY PACK	PRINTER	DESCRIPTION	LIST PRICE
TEC9104	1		4" Replacement Printhead for TXP/TEC SX series printer	\$399.00
TEC9105	1		5" Replacement Printhead for TXP/TEC SX series printer	\$549.00
TEC9130	1	● ●	6" Replacement Printhead 305 DPI for EX6 printer	\$589.00
CG408TT	1		4" Replacement Printhead for CG408 series printer	\$125.00
R37901800	1	●	CL4NX Plus Print Head (4.1" - 203 dpi)	\$475.00
R37901900	1	●	CL4NX Plus Print Head (4.1" - 305 dpi)	\$575.00
R37902000	1	●	CL4NX Plus Print Head (4.1" - 609 dpi)	\$1,350.00
R32169600	1	●	CL6NX Printers - CL608NX Print Head (6.5" - 203 dpi)	\$525.00
R32169900	1	●	CL6NX Printers - CL612NX Print Head (6.5" - 305 dpi)	\$825.00
WT205-001	1	●	Print Head (203dpi) WS408TT	\$125.00
WT301-001	1	●	Print Head (300dpi) WS412TT	\$250.00

Upgrading Your Computer?

Today's computers now come standard with USB ports only. Don't worry, SATO America now has a solution. We now offer a serial to USB port conversion kit, eliminating the need to add a costly new USB port to your printer.

Thermal Accessories

ITEM NO.	QTY PACK	PRINTER	DESCRIPTION	LIST PRICE
T1000	1	● ● ● ●	USB Cable, A-B, 6' Black	\$4.44
T2209	1	● ● ● ●	Adapter, USB to Serial	\$36.00
T2210	1	● ● ● ●	USB Extension Cable, 6'	\$7.35
T2505	1	● ● ● ●	Power Cord, 6'	\$10.07
T7100	1	● ● ● ●	Head Cleaning Pen	\$3.00
T7200	1	● ● ● ●	Adhesive Remover	\$15.98
T9250	1	● ● ● ●	Adapter, D89-to-DB25, 1'	\$6.65
TXPCOVER	1	● ●	TXP Series Printer Cover	\$39.95
TEC9004-R	1		Ethernet Port Option (SX series)	\$395.00
59-C2103-011	1	● ● ● ●	Argox Unwinder	\$29.00



T1000



T2209



T2210



T2505



T9250

● Prints up to 6" on 6" web (material width). TECEX6M

● Prints up to 6.5" on a 7" web (material width). Fits most SATO printers. Print width may vary.

● Prints up to 6" on a 10" web (material width). TXPEX6

● Prints up to 4" on a 4.5" web (material width). CL4NX - WS4

TAGGIT® Pro Labeling Design Software and Database

Choosing the right software package is essential to meeting the requirements of your on-demand label printing program.

We'll help you analyze your needs, assist with installation, make modifications to your database, and ensure the settings are correct for your label printing process. Ask us about software and updates.

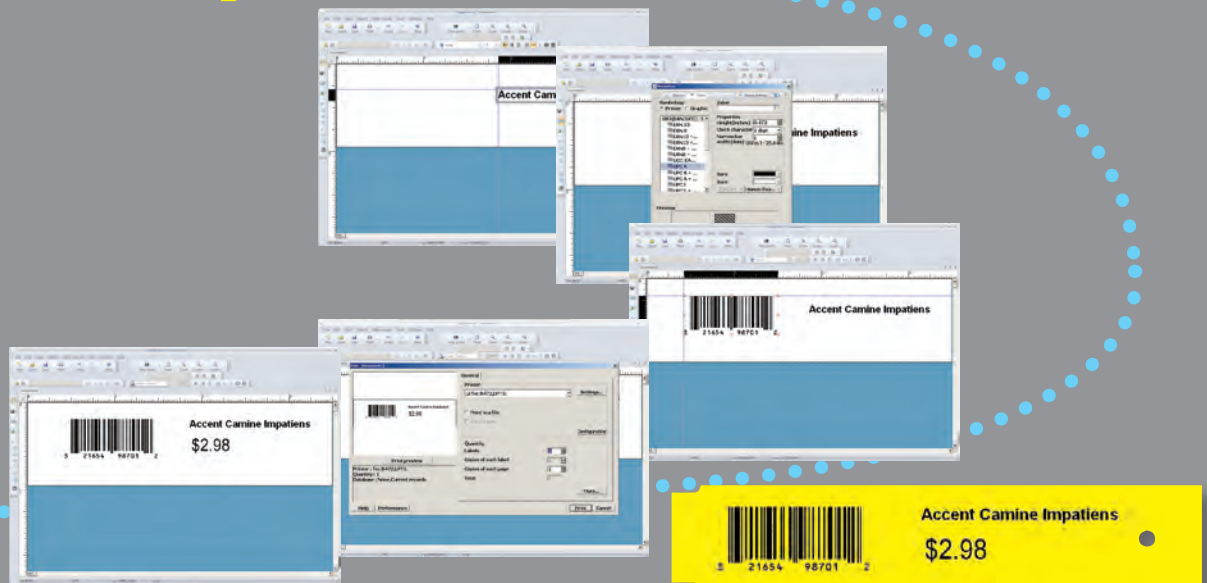
Whether you need to print bar codes, text, graphic images, color pictures or from a database, TAGGIT Pro has the features to help you design and print tags and labels with ease. • Microsoft ready • Batch printing • Full-featured database construction capabilities • Utilize TrueType fonts, bar codes, preset formats for all our labels and graphics capabilities • Free phone support 704-644-1660 • Includes plant database designed by our company with over 4500 records. This includes Annuals, Perennials, Trees and Broadleaf Shrubs, and is totally editable to add additional varieties or information.

LABEL DESIGN SOFTWARE			
Item #	Product	Function	List
TAG17PRO1	TAGGIT PRO 17 KEYLESS	Graphic & Native Barcodes, TCP/IP Printing, Unicode Font Support, Etc.	\$495.00
TAG17GLD1	TAGGIT GOLD 17 KEYLESS	Plus Job Modifier, Form Designer & Viewer, Text Management with RFID Function	\$1,195.00

TAGGIT UPGRADES			
Item #	Product	Function	List
TAGPRO17UPG*	TAGGIT PRO 12 UPGRADE	TAGGIT PRO 12 TO TAGGIT PRO 17 KEYLESS	\$259.00
TAGGLD17UPG*	TAGGIT PRO 12 UPGRADE	TAGGIT PRO 12 TO TAGGIT GOLD 17 KEYLESS	\$875.00
TAGPROGLDUPG*	TAGGIT PRO 17 UPGRADE	TAGGIT PRO 17 TO TAGGIT GOLD 17 KEYLESS	\$595.00

* Valid Taggit Serial Number required with order.

From Template



To Tag

WANT A FREE 30 DAY TRIAL OF THIS SOFTWARE?

Go to the site below, and click on current software file.

<http://horticulture.satoamerica.com/software.aspx>

NiceLabel®



Want a free 30 day trial of this software?

Go to the site below and click on the current software file.

<https://www.satoamerica.com/resource-library/software/nicelabel.aspx>

Quickly Design and Print Barcode Labels Without IT Help

Get started and finished with label design today. The NiceLabel designer delivers a familiar Microsoft Word-like user experience. This means anyone can quickly design professional labels without previous knowledge of barcoding or designer training. [Learn more about label design.](#)

Print accurately and consistently without printing errors. Printing labels with dynamic data is different from printing other types of documents. The labeling system needs to enable production and warehouse staff to print quickly and without errors. NiceLabel comes with an all-in-one printing form that helps users print accurate labels without the risk of error. [Learn more about error-free label printing.*](#)

Design & Print - NiceLabel Designer Express

ITEM NO.	PRODUCT	LIST PRICE	FUNCTION
WNEXX001S	Designer Express 1 User	\$295.00	Database Functionality

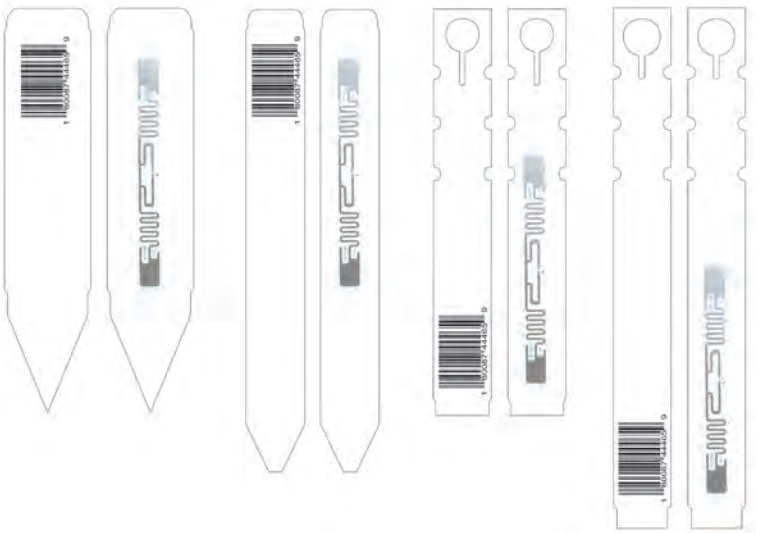
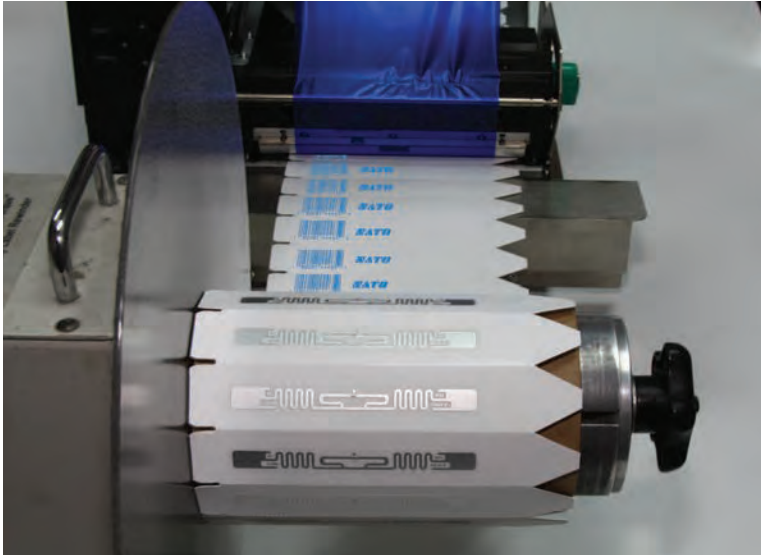
*Free NiceLabel edition with limited functionality, exclusively for use with WS4 printers. No database support.

SATO Horticultural RFID Solutions

RFID Tagging is an ID system that uses radio frequency for object identification and tracking purposes. A radio frequency identification (RFID) system includes:

- An RFID tag – an antenna with an integrated circuit, IC for data storage and communication with the RFID reader.
- A read/write device
- A host application for data collection, storage, processing and or transmission.

RFID uses radio waves to automatically identify and track the tags containing electronically stored information attached to plants or inserted into pots.



The SATO RFID solution allows growers to track and store data about their products. Fitting every shelf, row or plant with a RFID tag, growers will be able to monitor stages and progress of potentially every plant in a greenhouse.

Beyond the greenhouse, shipping containers with RFID identification will enable tracking, from the crop to the market.

In addition to tracking, a RFID system provides information such as place of origin or date of harvest.

Thermal Printing (T)

Thermal printing is a system whereby heating of ribbon transfers print onto the surface of the print material.

Print Charges

	1-Side	2-Side
Print less than 1"	\$9.00/M	\$1725/M
Print 1" or greater	\$12.50/M	\$23.00/M
End to End, Laser and Pressure Sensitive	Quote	Quote

*Quantities per variety not ordered in increments of 1000, will be subject to a charge of \$2.50 per variety.

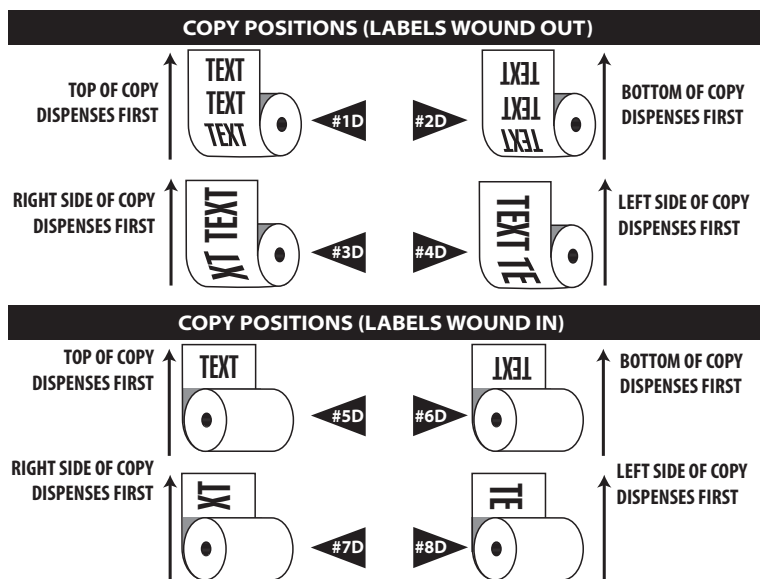
500 min per variety.

Setup Charges

Straight Line Copy	\$2.50/var.
Logo setup from provided artwork	\$35.00/ea.
Logos and Artwork	\$60.00/hr.
UPC Code or Barcode	\$2.00/M
Quantity increment charge*	\$2.50/var.
Consecutive Numbering	\$10.00/M
Print color other than Black	\$5.00/M



STANDARD LABEL DISPENSING DIRECTIONS



Flexographic Printing (F)

Often abbreviated to flexo, this is a method of printing most commonly used for packaging. A flexo print is achieved by creating a mirrored master of the required image as a 3D relief in a rubber or polymer material. A measured amount of ink is deposited upon the surface of the printing plate (or printing cylinder) using an anilox roll. The print surface then rotates, contacting the print material which transfers the ink.

Print Charges

Flexo printing - Call for quotation.

Setup Charges

Plate Setup Charges may apply

PMS colors

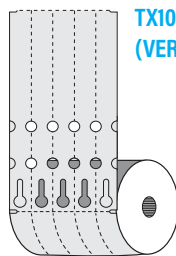
Additional \$85.00 charge for colors not listed.



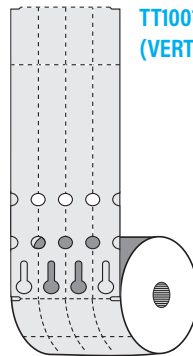
Thermal Slip-On® End to End Tags

LOW DENSITY POLYETHYLENE (TX, TT) 10 MIL

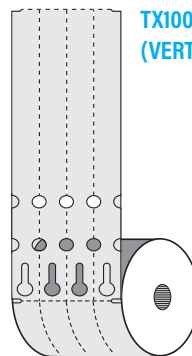
Our Thermal Slip-On tags are a great way of identifying your product. Once locked, it will stay on the plant material until removed. Thermal print adheres to the surface for years, and will not fade away. The dry printing process means tags are ready to use as they come off the printer. Our Thermal Slip-On tags can be preprinted flexographically during the manufacturing process or with the thermal transfer printing method.



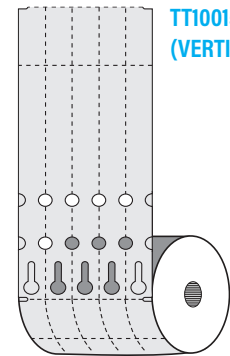
TX10775
(VERTICAL FEED)



TT10014
(VERTICAL FEED)



TX10014
(VERTICAL FEED)



TT10015
(VERTICAL FEED)

COLOR OPTIONS: WH YE

ITEM NO.	PRINTER	SIZE	NO. ACROSS	TYPE OF PREPRINT	QTY ROLL/ CASE	WEIGHT/ CASE	4M	8M	16M	48M	96M
TX10775		3/4 x 7	5	T,F	2M / 16M	28 LB	\$29.07	\$25.79	\$18.64	\$16.70	\$14.91
TT10014		1 x 10 w/ 2" tear-off	4	T,F	1M / 8M	27 LB	\$40.67	\$36.08	\$26.07	\$23.36	\$20.85
TT10015		1 x 10 w/ 2" tear-off	5	T,F	2M / 8M	26 LB	\$41.53	\$36.84	\$26.62	\$23.85	\$21.30
TX10014		1 x 10 (4" WEB)	4	T,F	1M / 8M	27 LB	\$44.41	\$39.40	\$28.47	\$25.51	\$22.77
TX10015		1 x 10 (5" WEB)	5	T,F	2M / 8M	26 LB	\$47.06	\$41.75	\$30.17	\$27.03	\$24.13

COLOR OPTIONS: RE OR TN LI GR TU BU LA PU PI

ITEM NO.	PRINTER	SIZE	NO. ACROSS	TYPE OF PREPRINT	QTY ROLL/ CASE	WEIGHT/ CASE	4M	8M	16M	48M	96M
TX10775		3/4 x 7	5	T,F	2M / 16M	28 LB	\$33.43	\$29.66	\$21.43	\$19.20	\$17.15
TT10014		1 x 10 w/ 2" tear-off	4	T,F	1M / 8M	27 LB	\$46.77	\$41.49	\$29.98	\$26.86	\$23.99
TT10015		1 x 10 w/ 2" tear-off	5	T,F	2M / 8M	26 LB	\$47.75	\$42.37	\$30.61	\$27.43	\$24.49

Minimum order: Roll quantity - 1000 per variety, Setup and printing charges will apply -- Call your SATO Authorized Master Reseller for quote.
Please call for 96M+ pricing.

M = 1,000

Thermal Slip-On® Tags

LOW DENSITY POLYETHYLENE (TX, TT) 10 MIL

Our Thermal Slip-On tags are a great way of identifying your product. Once locked, it will stay on the plant material until removed. Thermal print adheres to the surface for years, and will not fade away. The dry printing process means tags are ready to use as they come off the printer. Our Thermal Slip-On tags can be preprinted with the thermal transfer printing method.



(HORIZONTAL FEED) TX1055T

(HORIZONTAL FEED) TT1091T

(HORIZONTAL FEED) TX1075T - TX1077T - TX1076T
TX1071T - TX1091T - TX1097T



COLOR OPTIONS: WH YE

ITEM NO.	PRINTER	SIZE	NO. ACROSS	TYPE OF PREPRINT	QTY ROLL/ CASE	WEIGHT/ CASE	4M	8M	16M	48M	96M
TX1055T	● ● ●	1/2 x 5	1	T	4M / 16M	14 LB	\$19.42	\$17.23	\$12.45	\$11.15	\$9.96
TX1075T	● ●	1/2 x 7	1	T	2M / 16M	19 LB	\$22.95	\$20.36	\$14.71	\$13.18	\$11.77
TX1076T	● ●	5/8 x 7	1	T	2M / 16M	22 LB	\$27.23	\$24.16	\$17.45	\$15.64	\$13.96
TX1077T	● ●	3/4 x 7	1	T	2M / 10M	19 LB	\$30.89	\$27.41	\$19.80	\$17.74	\$15.84
TX1097T	●	3/4 x 9	1	T	2M / 10M	24 LB	\$36.40	\$32.30	\$23.34	\$20.91	\$18.67
TT1097T (WH ONLY)	●	3/4 x 9 w/ 17/8" tear off	1	T	2M / 10M	24 LB	\$36.40	\$32.30	\$23.34	\$20.91	\$18.67
TX1071T	● ●	1 x 7	1	T	2M / 10M	23 LB	\$36.86	\$32.70	\$23.63	\$21.17	\$18.90
TX1091T	●	1 x 9	1	T,F	2M / 10M	30 LB	\$43.96	\$39.00	\$28.18	\$25.25	\$22.55
TT1091T	●	1 x 9 w/ 17/8" tear off	1	T,F	2M / 10M	30 LB	\$43.96	\$39.00	\$28.18	\$25.25	\$22.55

COLOR OPTIONS: RE OR TN LI GR TU BU LA PU PI

ITEM NO.	PRINTER	SIZE	NO. ACROSS	TYPE OF PREPRINT	QTY ROLL/ CASE	WEIGHT/ CASE	4M	8M	16M	48M	96M
TX1055T	● ● ●	1/2 x 5	1	T	4M / 16M	14 LB	\$22.31	\$19.79	\$14.30	\$12.81	\$11.44
TX1075T	● ●	1/2 x 7	1	T	2M / 16M	19 LB	\$26.39	\$23.41	\$16.91	\$15.16	\$13.53
TX1076T	● ●	5/8 x 7	1	T	2M / 16M	22 LB	\$31.30	\$27.77	\$20.07	\$17.98	\$16.05
TX1077T	● ●	3/4 x 7	1	T	2M / 10M	19 LB	\$35.52	\$31.52	\$22.77	\$20.40	\$18.22
TX1097T	●	3/4 x 9	1	T	2M / 10M	24 LB	\$41.85	\$37.13	\$26.83	\$24.04	\$21.46
TX1071T	● ●	1 x 7	1	T	2M / 10M	23 LB	\$42.41	\$37.62	\$27.18	\$24.36	\$21.75
TX1091T	●	1 x 9	1	T,F	2M / 10M	30 LB	\$50.56	\$44.86	\$32.41	\$29.04	\$25.93
TT1091T	●	1 x 9 w/ 17/8" tear off	1	T,F	2M / 10M	30 LB	\$50.56	\$44.86	\$32.41	\$29.04	\$25.93

Minimum order: Roll quantity - 1000 per variety, Setup and printing charges will apply -- See page 9 for more information or call your SATO Authorized Master Reseller for quote.

Please call for 96M+ pricing.

M = 1,000

● Prints up to 6" on 6" web (material width). TECEX6M

● Prints up to 6.5" on a 7" web (material width). Fits most SATO printers. Print width may vary.

● Prints up to 6" on a 10" web (material width). TXPEX6

● Prints up to 4" on a 4.5" web (material width). CL4NX - WS4

Thermal Pot Tags

STYRENE MATERIAL (ZX) 13 MIL (WHITE MATERIAL ONLY),
STYRENE MATERIAL (SX) 20 MIL, HEAVY PLASTIC MATERIAL (PX) 23 MIL

Our Thermal Pot Tags can be preprinted using thermal transfer (all materials listed), and flexo (ZX 13mil Styrene only). Thermal print adheres to the surface for years, and will not fade away. The dry printing process means tags are ready to use as they come off the printer.



Styrene Material (ZX) and Styrene Material (SX) 

Heavy Plastic Material (PX) 

COLOR OPTIONS: WH

ITEM NO.	PRINTER	SIZE	NO. ACROSS	TYPE OF PREPRINT	QTY ROLL / CASE	WEIGHT / CASE	4M	8M	16M	48M	96M
ZX5135T		1/2 X 3	1	T	5M/20M	15 LB	\$19.20	\$17.03	\$12.31	\$11.03	\$9.84
ZX5156T		9/16 X 5	1	T	2M/20M	29 LB	\$24.56	\$21.79	\$15.75	\$14.11	\$12.60
ZX5157T		3/4 X 5	1	T	2M/20M	40 LB	\$28.29	\$25.10	\$18.14	\$16.25	\$14.51
ZX5141T		1 X 4-1/2	1	T,F	2M/16M	35 LB	\$34.34	\$30.46	\$22.01	\$19.72	\$17.61
ZX5152T		1-1/2 X 5	1	T,F	1M/10M	35 LB	\$52.86	\$46.89	\$33.88	\$30.36	\$27.11
SX5146T		9/16 X 4	1	T	2M/16M	24 LB	\$27.45	\$24.36	\$17.60	\$15.77	\$14.08
SX5156T		9/16 X 5	1	T	2M/16M	34 LB	\$28.80	\$25.55	\$18.46	\$16.54	\$14.77
SH5157T		3/4 x 5 w/ 1/8" hole at point	1	T	2M/16M	44 LB	\$33.07	\$29.34	\$21.20	\$18.99	\$16.96
SX5157T		3/4 X 5	1	T	2M/16M	44 LB	\$33.07	\$29.34	\$21.20	\$18.99	\$16.96
SX5167T		3/4 X 6	1	T	2M/16M	54 LB	\$37.33	\$33.12	\$23.93	\$21.44	\$19.14
SX5151T		1 X 5	1	T	1M/8M	32 LB	\$39.09	\$34.68	\$25.06	\$22.45	\$20.05
SX5161T		1 X 6	1	T	1M/8M	39 LB	\$45.99	\$40.80	\$29.48	\$26.42	\$23.59
SX5181T		1 X 8	1	T	1M/4M	27 LB	\$57.57	\$51.07	\$36.90	\$33.06	\$29.52
SX5152T		1-1/2 X 5	1	T	1M/8M	43 LB	\$61.71	\$54.74	\$39.56	\$35.44	\$31.64
PX5135T		1/2 X 3	1	T	2M/12M	15 LB	\$21.10	\$18.72	\$13.53	\$12.12	\$10.82
PX5156T		9/16 X 5	1	T	2M/16M	34 LB	\$30.24	\$26.83	\$19.38	\$17.37	\$15.51
PX5157T		3/4 X 5	1	T	2M/16M	44 LB	\$34.66	\$30.75	\$22.22	\$19.91	\$17.78
PX5167T		3/4 X 6	1	T	2M/16M	54 LB	\$39.66	\$35.19	\$25.42	\$22.78	\$20.34
PX5151T		1 X 5	1	T	1M/8M	32 LB	\$44.80	\$39.75	\$28.72	\$25.73	\$22.98
PX5161T		1 X 6	1	T	1M/8M	39 LB	\$51.59	\$45.77	\$33.07	\$29.63	\$26.45
PX5181T		1 X 8	1	T	1M/4M	27 LB	\$65.17	\$57.82	\$41.77	\$37.43	\$33.42
PX5152T		1-1/2 X 5	1	T	1M/4M	22 LB	\$61.40	\$54.47	\$39.36	\$35.26	\$31.49
PX5172T		1-1/2 X 7	1	T	1M/4M	31 LB	\$70.58	\$62.61	\$45.24	\$40.54	\$36.19

Minimum order: Roll quantity - 1000 per variety, Setup and printing charges will apply -- See page 9 for more information or call your SATO Authorized Master Reseller for quote.

Please call for 96M+ pricing.

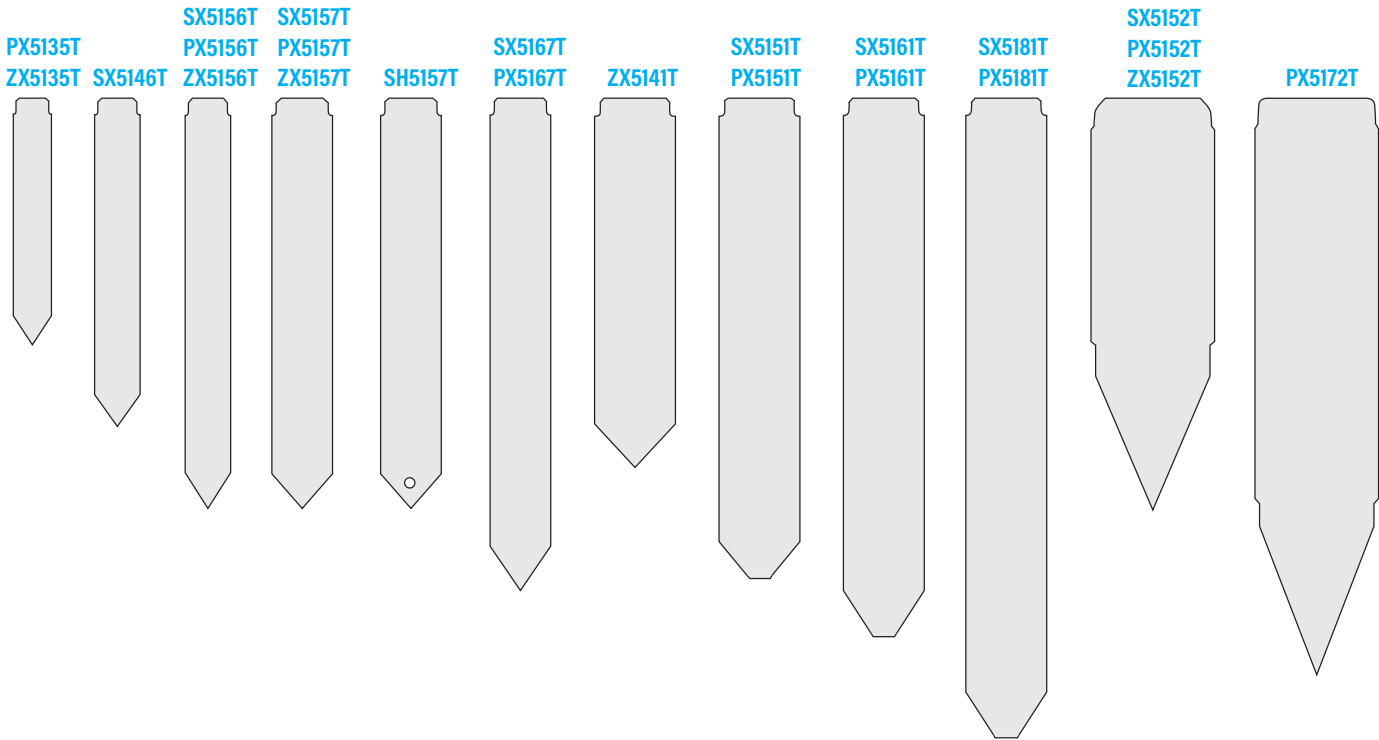
M = 1,000

Prints up to 6" on 6" web (material width). TECEX6M

Prints up to 6.5" on a 7" web (material width). Fits most SATO printers. Print width may vary.

Prints up to 6" on a 10" web (material width). TXPEX6

Prints up to 4" on a 4.5" web (material width). CL4NX - WS4



COLOR OPTIONS: **RE** **OR** **YE** **TU** **LA** **PI**

ITEM NO.	PRINTER	SIZE	NO. ACROSS	TYPE OF PREPRINT	QTY ROLL/ CASE	WEIGHT/ CASE	4M	8M	16M	48M	96M
SX5156T	● ●	9/16 X 5	1	T	2M/16M	34 LB	\$31.67	\$28.10	\$20.30	\$18.19	\$16.24
SX5157T	● ●	3/4 X 5	1	T	2M/16M	44 LB	\$36.36	\$32.26	\$23.31	\$20.89	\$18.65
SX5167T	● ●	3/4 X 6	1	T	2M/16M	54 LB	\$41.06	\$36.42	\$26.32	\$23.58	\$21.05
SX5151T	● ●	1 X 5	1	T	1M/8M	32 LB	\$42.98	\$38.13	\$27.55	\$24.69	\$22.04
SX5161T	● ●	1 X 6	1	T	1M/8M	39 LB	\$50.58	\$44.88	\$32.42	\$29.05	\$25.94
SX5181T	●	1 X 8	1	T	1M/4M	27 LB	\$63.30	\$56.16	\$40.58	\$36.36	\$32.46
SX5152T	● ●	1-1/2 X 5	1	T	1M/8M	43 LB	\$67.89	\$60.23	\$43.52	\$38.99	\$34.82

COLOR OPTIONS: **RE** **OR** **YE** **TN** **LI** **TU** **LA** **PI**

ITEM NO.	PRINTER	SIZE	NO. ACROSS	TYPE OF PREPRINT	QTY ROLL/ CASE	WEIGHT/ CASE	4M	8M	16M	48M	96M
PX5135T	● ●	1/2 X 3	1	T	2M/12M	15 LB	\$24.28	\$21.54	\$15.56	\$13.94	\$12.45
PX5156T	● ●	9/16 X 5	1	T	2M/16M	34 LB	\$34.79	\$30.86	\$22.30	\$19.98	\$17.84
PX5157T	● ●	3/4 X 5	1	T	2M/16M	44 LB	\$39.85	\$35.35	\$25.54	\$22.89	\$20.43
PX5167T	● ●	3/4 X 6	1	T	2M/16M	54 LB	\$45.62	\$40.48	\$29.25	\$26.20	\$23.40
PX5151T	● ●	1 X 5	1	T	1M/8M	32 LB	\$51.50	\$45.69	\$33.02	\$29.58	\$26.41
PX5161T	● ●	1 X 6	1	T	1M/8M	39 LB	\$59.35	\$52.65	\$38.04	\$34.09	\$30.44
PX5181T	●	1 X 8	1	T	1M/4M	27 LB	\$74.96	\$66.50	\$48.05	\$43.05	\$38.44
PX5152T	● ●	1-1/2 X 5	1	T	1M/4M	22 LB	\$70.60	\$62.63	\$45.25	\$40.55	\$36.20
PX5172T	●	1-1/2 X 7	1	T	1M/4M	31 LB	\$81.17	\$72.01	\$52.03	\$46.62	\$41.62

Minimum order: Roll quantity - 1000 per variety, Setup and printing charges will apply -- See page 9 for more information or call your SATO Authorized Master Reseller for quote.

M = 1,000

Please call for 96M+ pricing.

- Prints up to 6" on 6" web (material width). TECEX6M
- Prints up to 6" on a 10" web (material width). TXPEX6
- Prints up to 6.5" on a 7" web (material width). Fits most SATO printers. Print width may vary.
- Prints up to 4" on a 4.5" web (material width). CL4NX - WS4

Thermal Sta-Loc™ Hang Tags

HEAVY PLASTIC MATERIAL (PX) 23 MIL

Our Thermal Sta-Loc Hang Tags can be preprinted using the thermal transfer printing method.



PX2351T



PX2361T



COLOR OPTIONS: WH

ITEM NO.	PRINTER	SIZE	NO. ACROSS	TYPE OF PREPRINT	QTY ROLL/ CASE	WEIGHT/ CASE	4M	8M	16M	48M	96M
PX2351T		1 X 5	1	T	1M / 8M	33 LB	\$51.34	\$45.55	\$32.91	\$29.49	\$26.33
PX2361T		1 X 6	1	T	1M / 8M	40 LB	\$61.15	\$54.25	\$39.20	\$35.12	\$31.36

COLOR OPTIONS: RE OR YE TN LI TU LA PI

ITEM NO.	PRINTER	SIZE	NO. ACROSS	TYPE OF PREPRINT	QTY ROLL/ CASE	WEIGHT/ CASE	4M	8M	16M	48M	96M
PX2351T		1 X 5	1	T	1M / 8M	33 LB	\$59.04	\$52.38	\$37.85	\$33.91	\$30.28
PX2361T		1 X 6	1	T	1M / 8M	40 LB	\$70.31	\$62.38	\$45.07	\$40.38	\$36.06

Minimum order: Roll quantity - 1000 per variety, Setup and printing charges will apply -- See page 9 for more information or call your SATO Authorized Master Reseller for quote.

M = 1,000

Please call for 96M+ pricing.

PRINTER LEGEND

Prints up to 6" on 6" web (material width). TECEX6M

Prints up to 6.5" on a 7" web (material width). Fits most SATO printers. Print width may vary.

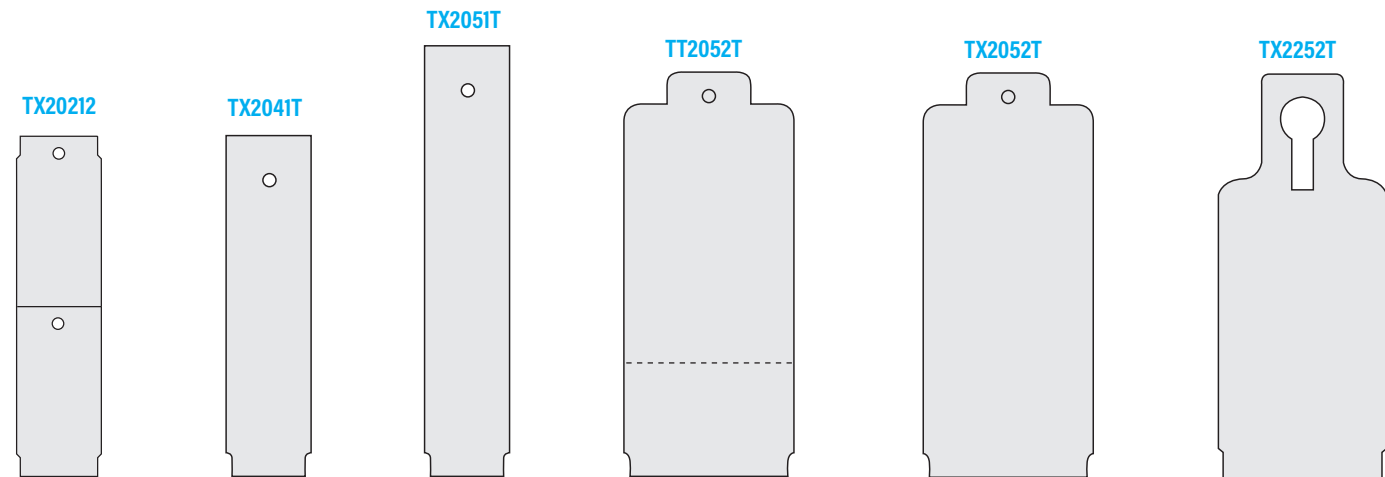
Prints up to 6" on a 10" web (material width). TXPEX6

Prints up to 4" on a 4.5" web (material width). CL4NX - WS4

Thermal Hang Tags

THERMAL MATERIAL (TX,TT) 10 MIL

Our Thermal Hang Tags can be preprinted flexographically during the manufacturing process or with the thermal transfer printing method.



COLOR OPTIONS: WH

ITEM NO.	PRINTER	SIZE	NO. ACROSS	TYPE OF PREPRINT	QTY ROLL / CASE	WEIGHT / CASE	4M	8M	16M	48M	96M
TX20212		1 x 2-1/8" w/ 1/8" hole	2	T,F	4M / 16M	13 LB	\$16.25	\$14.41	\$10.41	\$9.33	\$8.33
TX2041T		1 x 4 w/ 1/8" hole	1	T,F	2M / 30M	47 LB	\$31.73	\$28.15	\$20.34	\$18.23	\$16.27
TX2051T		1 x 5 w/ 1/8" hole	1	T,F	2M / 20M	38 LB	\$35.28	\$31.30	\$22.61	\$20.26	\$18.09
TX2052T		2 x 4-3/4 w/ 1/8" hole	1	T,F	1M / 10M	33 LB	\$53.35	\$47.33	\$34.20	\$30.64	\$27.36
TT2052T		2 x 4-3/4 w/ 1/8" hole & 1-3/8 t/o	1	T,F	1M / 10M	33 LB	\$53.35	\$47.33	\$34.20	\$30.64	\$27.36
TX2252T		2 x 4-3/4 w/ keyhole	1	T,F	1M / 10M	30 LB	\$53.35	\$47.33	\$34.20	\$30.64	\$27.36

Minimum order: Roll quantity - 1000 per variety, Setup and printing charges will apply -- See page 9 for more information or call your SATO Authorized Master Reseller for quote.

Please call for 96M+ pricing.

M = 1,000

Prints up to 6" on 6" web (material width). TECEX6M

Prints up to 6.5" on a 7" web (material width). Fits most SATO printers. Print width may vary.

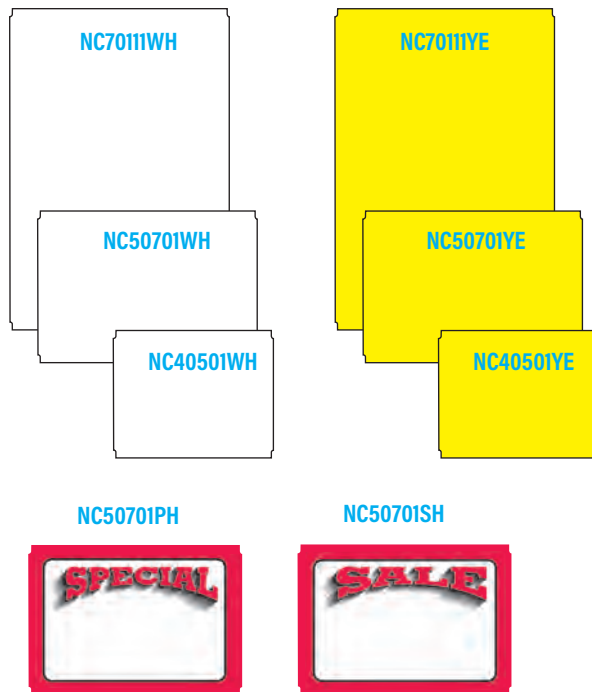
Prints up to 6" on a 10" web (material width). TXPEX6

Prints up to 4" on a 4.5" web (material width). CL4NX - WS4

Thermal Rigid Signs

RIGID MATERIAL (NC) 10 MIL

Rigid Material sign stock is ready for immediate insertion into the sign holders found on page 32.



COLOR OPTIONS: **WH**

ITEM NO.	PRINTER	STYLE	SIZE	NO. ACROSS	TYPE OF PREPRINT	QTY ROLL/CASE	WEIGHT/CASE	1C	5C	10C	25C
NC40501WH			4 x 5	1	T,F	1C / 16C 5C / 20C	13 LB 14 LB	\$21.45	\$17.70	\$14.48	\$12.87
NC50701WH			5 x 7	1	T,F	1C / 20C 5C / 20C	25 LB 25 LB	\$29.60	\$24.42	\$19.98	\$17.76
NC50701SH		Sale	5 x 7	1	T,F	1C / 20C	25 LB	\$40.80	\$33.66	\$27.54	\$24.48
NC50701PH		Special	5 x 7	1	T,F	1C / 20C	25 LB	\$40.80	\$33.66	\$27.54	\$24.48
NC7011WH			7 x 11	1	T,F	1C / 8C	22 LB	\$52.00	\$42.90	\$35.10	\$31.20

COLOR OPTIONS: **YE**

ITEM NO.	PRINTER	STYLE	SIZE	NO. ACROSS	TYPE OF PREPRINT	QTY ROLL/CASE	WEIGHT/CASE	1C	5C	10C	25C
NC40501YE			4 x 5	1	T,F	1C / 16C 5C / 20C	13 LB 14 LB	\$25.35	\$20.91	\$17.11	\$15.21
NC50701YE			5 x 7	1	T,F	1C / 20C 5C / 20C	25 LB 25 LB	\$35.45	\$29.25	\$23.93	\$21.27
NC7011YE			7 x 11	1	T,F	1C / 8C	22 LB	\$62.00	\$51.15	\$41.85	\$37.20

Setup and printing charges will apply -- See page 9 for more information or call your SATO Authorized Master Reseller for quote.

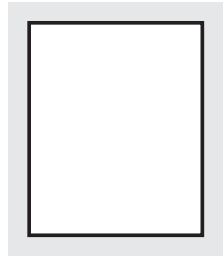
C = 100

Thermal Pressure Sensitive Signs

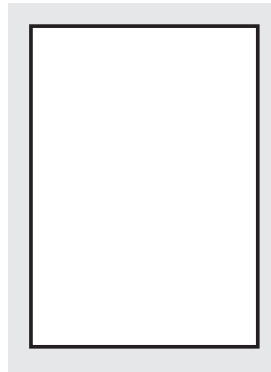
FLORATHERM (FT)

The floratherm material is designed with an aggressive adhesive and top coated face stock that resists water and sunlight while providing a superior thermal transfer print surface. The signs can be applied to smooth damp containers, flats, and trays. Signs may be printed with decorative borders and your company name or logo. Signs can also be flood coated to create additional color options.

FT40501WH



FT50701WH



COLOR OPTIONS: **WH**

ITEM NO.	PRINTER	SIZE (WXH)	NO. ACROSS	TYPE OF PREPRINT	*PERF	QTY ROLL/CASE	WEIGHT/CASE	1C	5C	10C	25C
FT40501WH		4 x 5	1	T,F	N	1C / 14C 5C / 30C	11 LB 18 LB	\$17.78	\$14.67	\$12.00	\$10.67
FT50701WH		5 x 7	1	T,F	H	1C / 24C 5C / 20C	27 LB 20 LB	\$25.47	\$21.01	\$17.19	\$15.28

*Perforation direction: L = Lineal, H = Horizontal, and N = None.

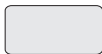
Setup and printing charges will apply -- See page 9 for more information or call your SATO Authorized Master Reseller for quote.

C = 100

Thermal Transfer Pressure Sensitive Paper Labels

The face sheet is thermal receptive and can be floodcoated in various colors to be used in case labeling and for product identification in warehouses. The high-quality face sheet is coupled with an aggressive, permanent adhesive to ensure long-term adhesion of the label. If direct thermal printing is the preferred print method, SATO also offers direct thermal pressure sensitive paper labels for various applications.

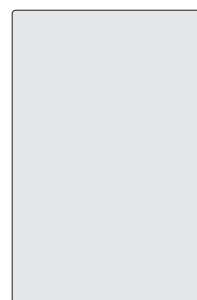
L8TT1013R



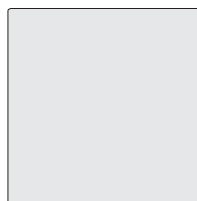
L8TT0016R



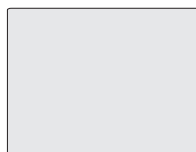
L8TT0004R



L8TT0008R



L8TT0022R



L8TT0027R



COLOR OPTIONS: **WH**

ITEM NO.	PRINTER	SIZE	NO. ACROSS	TYPE OF PREPRINT	QTY ROLL/CASE	WEIGHT/CASE
L8TT1013R		2 x 1	1	T,F	5,190 EA / 51,900 EA	24 LB
L8TT0016R		2 x 1	2	T,F	11,000 EA / 88,000 EA	23 LB
L8TT0027R		4 x 2	1	T,F	2,740 EA / 10,960 EA	23 LB
L8TT0022R		4 x 3	1	T,F	1,870 EA / 7,480 EA	24 LB
L8TT0008R		4 x 4	1	T,F	1,410 EA / 5,640 EA	24 LB
L8TT0004R		4 x 6	1	T,F	1,000 EA / 4,000 EA	24 LB

Setup and printing charges will apply -- See page 9 for more information or call your SATO Authorized Master Reseller for quote.

Prints up to 6" on 6" web (material width). TECEX6M

Prints up to 6.5" on a 7" web (material width). Fits most SATO printers. Print width may vary.

Prints up to 6" on a 10" web (material width). TXPEX6

Prints up to 4" on a 4.5" web (material width). CL4NX - WS4

Thermal Pressure Sensitive Labels

FLORATHERM (FT)

Floratherm material is an aggressive adhesive, top coated face stock that resists water and sunlight while providing a superior thermal transfer print surface. The labels can be applied to smooth damp containers, flats, and trays. These labels can be pre-printed flexographically during the manufacturing process or with the thermal transfer printing method. Labels are wound in.

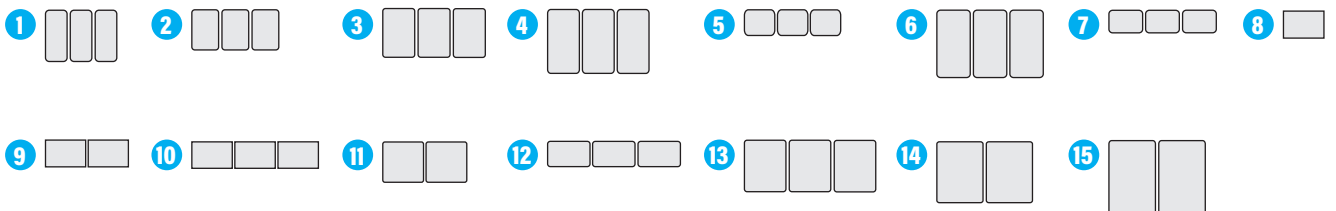
Clear and Block-out Labels

The label sizes below are also available in a Clear Synthetic (Plastic) or with Block-out material. Clear labels are commonly used to place variable data on custom printed picture tags. Block-out labels are used to cover up what is behind the label. If you need to re-price or change a barcode, the Block-out label will not allow the original information to show through. If you are interested in either application, please call your SATO Authorized Master Reseller for a quote. Minimums may apply.

COLOR OPTIONS: **WH**

	ITEM NO.	PRINTER	SIZE	NO. ACROSS	TYPE OF PREPRINT	*PERF	QTY ROLL/ CASE	WEIGHT/ CASE	5M	10M	20M	50M	100M
1	FT07113WH		3/4 x 1-5/16	3	T,F	N	9M / 72M	25 LB	\$12.19	\$7.33	\$6.24	\$5.85	\$5.49
2	FT10153WH		1 x 1-1/2	3	T,F	N	9M / 36M	17 LB	\$11.65	\$7.01	\$5.96	\$5.59	\$5.25
3	FT11183WH		1-3/16 X 1-13/16	3	T,F	L	8M / 32M	21 LB	\$13.54	\$8.14	\$6.93	\$6.50	\$6.10
4	FT11233WH		1-3/16 x 2-3/8	3	T,F	N	6M / 24M	20 LB	\$15.86	\$9.54	\$8.11	\$7.61	\$7.15
5	FT12103WH		1-1/8 x 15/16	3	T,F	L	15M / 60M	19 LB	\$16.68	\$10.03	\$8.53	\$8.00	\$7.52
6	FT12253WH		1-1/4 x 2-1/2	3	T,F	H	6M / 24M	22 LB	\$11.65	\$7.01	\$5.96	\$5.59	\$5.25
7	FT12083WH		1-1/4 x 7/8	3	T,F	N	15M / 60M	21 LB	\$11.78	\$7.08	\$6.03	\$5.65	\$5.31
8	FT15101WH		1-1/2 x 1	1	T,F	N	5M / 60M	29 LB	\$12.57	\$7.56	\$6.43	\$6.03	\$5.67
9	FT15102WH		1-1/2 x 1	2	T,F	N	10M / 60M	27 LB	\$12.04	\$7.24	\$6.16	\$5.78	\$5.43
10	FT15103WH		1-1/2 x 1	3	T,F	N	15M / 60M	27 LB	\$11.65	\$7.01	\$5.96	\$5.59	\$5.25
11	FT15152WH		1-1/2 x 1-1/2	2	T,F	N	7M / 42M	28 LB	\$15.02	\$9.03	\$7.68	\$7.21	\$6.77
12	FT16103WH		1-9/16 x 15/16	3	T,F	L	15M / 60M	27 LB	\$11.22	\$6.75	\$5.74	\$5.39	\$5.06
13	FT16203WH		1-9/16 x 1-15/16	3	T,F	L	7M / 28M	26 LB	\$21.78	\$13.09	\$11.14	\$10.45	\$9.82
14	FT17222WH		1 3/4 x 2 1/4	2	T,F	H	4M / 16M	19 LB	\$21.93	\$13.18	\$11.22	\$10.53	\$9.89
15	FT17272WH		1-3/4 x 2-3/4	2	T,F	L	4M / 16M	22 LB	\$23.82	\$14.32	\$12.18	\$11.43	\$10.74

M = 1,000



*Perforation direction: L = Lineal, H = Horizontal, and N = None.

Setup and printing charges will apply -- See page 9 for more information or call your SATO Authorized Master Reseller for quote.

Prints up to 6" on 6" web (material width). TECEX6M

Prints up to 6.5" on a 7" web (material width). Fits most SATO printers. Print width may vary.

Prints up to 6" on a 10" web (material width). TXPEX6

Prints up to 4" on a 4.5" web (material width). CL4NX - WS4

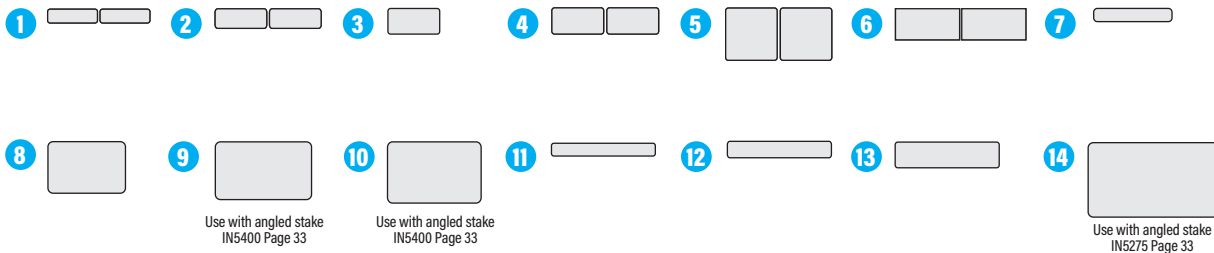


**WS4
DESKTOP PRINTER**

COLOR OPTIONS: WH

	ITEM NO.	PRINTER	SIZE	NO. ACROSS	TYPE OF PREPRINT	*PERF	QTY ROLL/ CASE	WEIGHT/ CASE	5M	10M	20M	50M	100M
1	FT20052WH		1-15/16 x 9/16	2	T,F	L	15M / 60M	21 LB	\$9.33	\$5.61	\$4.77	\$4.48	\$4.21
2	FT20072WH		2 x 3/4	2	T,F	N	12M / 48M	22 LB	\$10.02	\$6.02	\$5.13	\$4.81	\$4.52
3	FT20101WH		2 x 1	1	T,F	L	5M / 40M	24 LB	\$11.86	\$7.13	\$6.07	\$5.69	\$5.35
4	FT20102WH		2 x 1	2	T,F	L	10M / 40M	24 LB	\$10.12	\$6.09	\$5.18	\$4.86	\$4.56
5	FT20202WH		2 x 2	2	T,F	L	5M / 20M	23 LB	\$24.74	\$14.87	\$12.65	\$11.87	\$11.15
6	FT25122WH		2-1/2 x 1-1/4	2	T,F	L	8M / 32M	28 LB	\$19.48	\$11.71	\$9.97	\$9.35	\$8.78
7	FT30051WH		3 x 1/2	1	T,F	N	9M / 54M	26 LB	\$8.82	\$5.30	\$4.51	\$4.24	\$3.98
8	FT30201WH		3 x 2	1	T,F	H	2.5M / 15M	26 LB	\$43.43	\$26.11	\$22.22	\$20.84	\$19.58
9	FT37221WH		3-3/4 x 2-1/4	1	T,F	N	2M / 8M	20 LB	\$52.91	\$31.81	\$27.07	\$25.40	\$23.85
10	FT37251WH		3-5/8 x 2-3/8	1	T,F	N	2M / 8M	20 LB	\$66.30	\$39.86	\$33.92	\$31.82	\$29.89
11	FT40051WH		4 x 1/2	1	T,F	N	9M / 36M	22 LB	\$16.78	\$10.09	\$8.58	\$8.05	\$7.56
12	FT40061WH		4 x 5/8	1	T,F	N	5M / 20M	15 LB	\$17.77	\$10.69	\$9.09	\$8.53	\$8.01
13	FT40101WH		4 x 1	1	T,F	N	5M / 20M	23 LB	\$28.15	\$16.92	\$14.40	\$13.51	\$12.69
14	FT50281WH		5 x 2-7/8	1	T,F	N	1.875M / 75M	30 LB	\$86.32	\$51.89	\$44.16	\$41.43	\$38.91

M = 1,000



*Perforation direction: L = Lineal, H = Horizontal, and N = None.

Setup and printing charges will apply -- See page 9 for more information or call your SATO Authorized Master Reseller for quote.

- Prints up to 6" on 6" web (material width). TECEX6M
- Prints up to 6" on a 10" web (material width). TXPEX6
- Prints up to 6.5" on a 7" web (material width). Fits most SATO printers. Print width may vary.
- Prints up to 4" on a 4.5" web (material width). CL4NX - WS4

New Horticulture Products



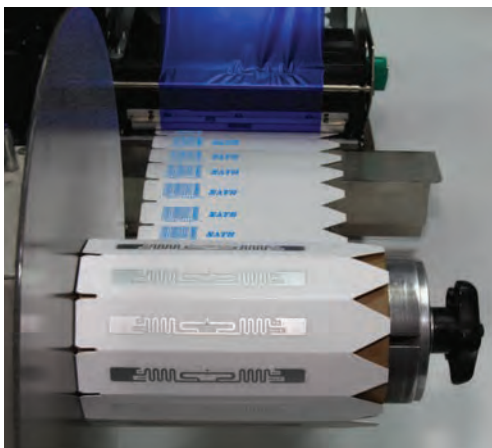
See
Page 2

TXPEX6 & TECEX6M THE LATEST IN SATO ENGINEERING

The Horticulture workplace requires rugged and durable design plus solid performance. The newly engineered TEC/TXP printer continues that reputation with the EX6 series.

The EX6 series is faster, with advanced processing capabilities and increased print speed, improving efficiencies. The EX6 has enhanced capabilities, with USB and Ethernet as a standard feature. RFID & Wireless options are available, making the EX6 the most advanced Horticulture printer on the market.

RFID INVESTMENT & ADVANCEMENT



See
Page 8

RFID technology is used across many industries to increase productivity and improve inventory control accuracy. SATO's investments and advancements are helping more and more nurseries take advantage of this technology. With SATO's new high speed applicator, SATO can add RFID inlays from various manufacturers to multiple sizes and styles of pot stakes and slip-on tags. SATO also offers the CL4NX, TECEX6M & TXPEX6 with RFID options, making SATO your full solution provider for printing and encoding RFID tags for the Horticulture environment.

Attach signs to racks inexpensively with a newly designed clip

APPLIES QUICKLY • HOLDS TIGHT • INEXPENSIVE



Whether you're a grower who ships to large retailers or a garden center that needs to display signs for your customers, the #RC35 plastic clip is the perfect solution.

Clips are packed 2,500 per bag. An order for 100,000 clips costs less than \$1,000. A single bag of 2,500 clips is only \$49.88. Lower prices for larger orders.

Texpak invented the plastic clip for apparel manufacturers over 50 years ago and designed the new #RC35 plastic clip specifically for racks used in the horticultural market. "If it clips, it's Texpak."

Invented, developed and available exclusively from Texpak, Inc., innovators in packaging since 1934.

"Simple solutions to complicated problems since 1934"

130 New Hyde Park Road, Franklin Square, New York 11010

1-800-645-3416

Attractive Labels Increase Product Sales!

Which label is right for fruit, vegetables, and any horticultural product?

Full Color Label Options



Partial Pre-Printed

- We print most of your information such as your name, logo and address in full color
- You can choose virtually any size and shape label
- Labels come with a blank area for imprinting on-site
- You imprint item, product code, bar code or any thing you want in blank area

Partial pre-prints are ideal for companies that stock one label for many products and don't want to worry about running out of labels for a specific product. To the left is a label for Nourse Farms before and after printing.

Fully Pre-Printed

- Order as few as 1,000 labels
- Orders of different labels with the same shape can be combined for best pricing
- Ideal if you have just a few different labels

Using a fully pre-printed label is ideal when you are ordering large quantities of the same labels.



Self-Printed Full Color Labels

- Ultimate flexibility to print what you want when you want
- Price of full color printers is continuing to drop
- High quality printing and excellent resolution
- Ideal if you have constantly changing products and information on labels

Printing color labels yourself makes the most sense when you need small quantities of a variety of different labels.



"Simple solutions to complicated problems since 1934"

130 New Hyde Park Road, Franklin Square, New York 11010

1-800-645-3416

Blank Labels

- Cost of labels is much less expensive than full or partially pre-printed labels
- Ability to print text, bar codes and graphics
- Most common sizes are in stock for immediate shipment
- Only one color can be printed. Usually black but color ribbons are available
- Certain special printers are available that can print two different colors



PRODUCT LABEL
 To the right is an example of a one-color product label printed with a blue ribbon on a white label.

UPC BARCODES AND PRICES
 Very often suppliers are required to affix a bar code, price or other information on the products they ship and sell. Our thermal printers and labels are excellent at this task. Information is usually printed on blank labels which can be either a custom color or white.



FSMA ALERT: With the new Food Safety Modernization Act (FSMA) in effect since 2017, it is critically important for fruit and vegetable growers to begin labeling their products according to the new rules. Texpak has been working with many customers to get them up to code and can work with your company to set you up for compliance.

Print Your Own Color Labels

It's easier and more cost-effective than ever.

If you've been considering printing your labels or signs in color, but have been putting the decision off because it was too expensive, it's time to reconsider. The cost of professional label printers and supplies has dropped significantly and it's now an economically-viable option for many customers.



L701

C3500

L501

If you're interested in printing in color, contact Texpak today and we can review your options with you to see if it now makes sense to switch.

CUSTOM SOLUTIONS TO FIT EACH CUSTOMER

Make a statement with Custom Signage and Custom Labeling for your nursery or garden center! SATO has a range of sign sizes and designs that can fit in traditional sign holders currently in your nursery or utilize our rack clips (see below) to attach directly to a rack of plants. See pages 28, 29 & 38 for more details on custom weatherproof signs and labels.

See Pages 28, 29 and 38



SIMPLE IDEAS MAKE A BIG IMPACT



See Page 32

Want to turn a rack of plants into a display case? Attach SATO signage with these inexpensive rack clips. Whether you're a grower who ships to large retailers or a garden center that needs to display signs for your customers, the #RC35 plastic clip is the perfect solution.

NEW PRODUCTS

Valueline Laser Printable Slip-On® Tags

LASER MATERIAL 6 MIL

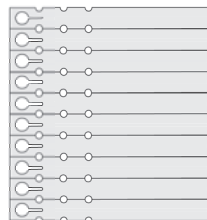
The Valueline Laser Printable product is a 6 mil material that is top coated on both sides to provide superior imaging and longevity outdoors. Our Valueline is viable for all of your monochrome laser printing applications and a solution to most of your color printing applications. This laser printable material can cover almost all of your laser printing needs. Our laser Slip-On tags may be preprinted with information such as company name, website, and logo for maximizing company visibility.



VLX1085SWH

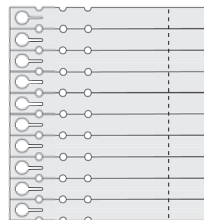


VLX1081SWH

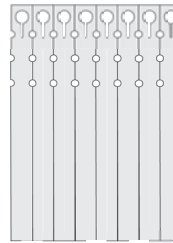


VLT1081SWH

With 1-3/4" Tear-off

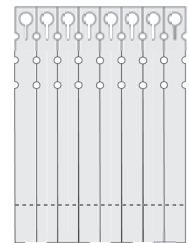


VLX1011SWH



VLT1011SWH

With 1-3/4" Tear-off



COLOR OPTIONS: **WH**

ITEM NO.	SIZE	TAGS PER SHEET	QTY PACK/CASE	WEIGHT/CASE	1M	5M	10M	20M	50M
VLX1085SWH	1/2 x 8 1/2	20	1M / 15M	28 LB	\$38.06	\$32.38	\$30.38	\$28.54	\$26.69
VLX1081SWH	1 x 8-1/2	10	1M / 10M	27 LB	\$50.97	\$43.37	\$40.69	\$38.22	\$35.74
VLT1081SWH	1 x 8-1/2 w/ 1 3/4" tear-off	10	1M / 10M	27 LB	\$50.97	\$43.37	\$40.69	\$38.22	\$35.74
VLX1011SWH	1 x 11	8	1M / 10M	28 LB	\$61.65	\$52.46	\$49.22	\$46.23	\$43.24
VLT1011SWH	1 x 11 w/ 1 3/4" tear-off	8	1M / 10M	28 LB	\$61.65	\$52.46	\$49.22	\$46.23	\$43.24

M = 1,000

Minimum: 1,000 tags per artwork change. Setup and printing charges will apply - See page 9 for more information or call your SATO Authorized Master Reseller for quote.

NOTE: Due to the number of laser printers on the market, customers are requested to order a free sample packet to thoroughly test the printer they are considering using.

NOTE: Prices are per 1,000 tags.

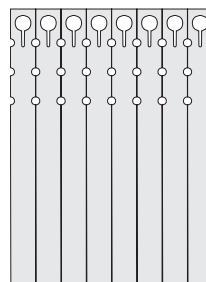
Superior Advantage Laser Printable Slip-On® Tags

LASER MATERIAL 8 MIL

The Superior Advantage Laser printable product is a 8 mil material that is top coated on both sides to provide superior imaging and longevity outdoors. Our Superior Advantage gives excellent resolution in color printing applications and a solution to all of your color laser printing needs. Our laser Slip-On tags may be preprinted with information such as company name, website, and logo for maximizing company visibility.

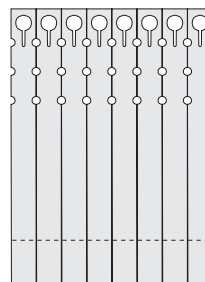


CLX1011SWH



CLT1011SWH

With 1-3/4" Tear-off



COLOR OPTIONS: WH

ITEM NO.	SIZE	TAGS PER SHEET	QTY PACK/CASE	WEIGHT/CASE	1M	5M	10M	20M	50M
CLX1011SWH	1 x 11	8	1M / 5M	24 LB	\$89.49	\$76.15	\$71.45	\$67.10	\$62.76
CLT1011SWH	1 x 11 w/ 1 3/4" tear-off	8	1M / 5M	24 LB	\$89.49	\$76.15	\$71.45	\$67.10	\$62.76

M = 1,000

Minimum: 1,000 tags per artwork change. Setup and printing charges will apply - See page 9 for more information or call your SATO Authorized Master Reseller for quote.

NOTE: Due to the number of laser printers on the market, customers are requested to order a free sample packet to thoroughly test the printer they are considering using.

NOTE: Prices are per 1,000 tags.

Valueline Laser Printable Hang Tags

LASER MATERIAL 6 MIL

Valueline Laser Printable Hang Tags are 6 mil material that is top coated on both sides to provide superior imaging and longevity outdoors. Our Valueline is viable for all of your monochrome laser printing applications and a solution to most of your color printing applications. This laser printable material can cover almost all of your laser printing needs. Our laser printable hang tags are available with preprinted care instruction or blank. They also can be custom printed flexographically up to three colors.



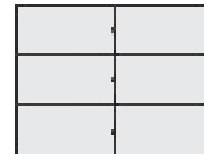
VLH2242SWH - VLH2242SWHP



VLH2842SWH - VLH2842SWHP



VLH2755SWH - VLH2755SWHP



COLOR OPTIONS: **WH**

ITEM NO.	SIZE	TAGS PER SHEET	TYPE OF PREPRINT	QTY PACK/CASE	WEIGHT/CASE	1M	5M	10M	20M	50M
VLH2242SWH (8.5"x11")	2.2 x 4.25	10	F	1M / 5M	18 LB	\$43.02	\$36.60	\$34.34	\$32.25	\$30.17
VLH2242SWHP* (8.5"x11")	2.2 x 4.25	10	F	1M / 5M	18 LB	\$50.35	\$42.85	\$40.20	\$37.75	\$35.31
VLH2842SWH (8.5"x14")	2.8 x 4.25	10	F	1M / 5M	24 LB	\$52.05	\$44.29	\$41.56	\$39.03	\$36.50
VLH2842SWHP* (8.5"x14")	2.8 x 4.25	10	F	1M / 5M	24 LB	\$59.80	\$50.89	\$47.75	\$44.84	\$41.94
VLH2755SWH (8.5"x11")	2.833 x 5.5	6	F	1M / 5M	30 LB	\$65.12	\$55.42	\$52.00	\$48.83	\$45.67
VLH2755SWHP* (8.5"x11")	2.833 x 5.5	6	F	1M / 5M	30 LB	\$73.50	\$62.54	\$58.68	\$55.11	\$51.54

M = 1,000

*Preprinted with generic care instructions

Setup and printing charges will apply -- See page 9 for more information or call your SATO Authorized Master Reseller for quote.

NOTE: Due to the number of laser printers on the market, customers are requested to order a free sample packet to thoroughly test the printer they are considering using.

NOTE: Prices are per 1,000 tags.

Superior Advantage Laser Printable Hang Tags

LASER MATERIAL 8 MIL

The Superior Advantage Laser printable product is a 8 mil material that is top coated on both sides to provide superior imaging and longevity outdoors. Our Superior Advantage gives excellent resolution in color printing applications and a solution to all of your color laser printing needs. Our laser printable hang tags are available with preprinted care instruction or blank. They also can be custom printed flexographically up to three colors.



CLH2242SWH - CLH2242SWHP



CLH2842SWH - CLH2842SWHP



CLH2755SWH - CLH2755SWHP



COLOR OPTIONS: **WH**

ITEM NO.	SIZE	TAGS PER SHEET	TYPE OF PREPRINT	QTY PACK/CASE	WEIGHT/CASE	1M	5M	10M	20M	50M
CLH2242SWH (8.5"x11")	2.2 x 4.25	10	F	1M / 5M	20 LB	\$65.73	\$55.93	\$52.48	\$49.28	\$46.09
CLH2242SWHP* (8.5"x11")	2.2 x 4.25	10	F	1M / 5M	20 LB	\$77.92	\$66.30	\$62.21	\$58.42	\$54.64
CLH2842SWH (8.5"x14")	2.8 x 4.25	10	F	1M / 5M	25 LB	\$85.02	\$72.35	\$67.88	\$63.75	\$59.62
CLH2842SWHP* (8.5"x14")	2.8 x 4.25	10	F	1M / 5M	25 LB	\$99.62	\$84.77	\$79.54	\$74.70	\$69.86
CLH2755SWH (8.5"x11")	2.833 x 5.5	6	F	1M / 5M	32 LB	\$110.29	\$93.85	\$88.06	\$82.70	\$77.34
CLH2755SWHP* (8.5"x11")	2.833 x 5.5	6	F	1M / 5M	32 LB	\$128.07	\$108.98	\$102.25	\$96.03	\$89.81

M = 1,000

*Preprinted with generic care instructions

Setup and printing charges will apply -- See page 9 for more information or call your SATO Authorized Master Reseller for quote.

NOTE: Due to the number of laser printers on the market, customers are requested to order a free sample packet to thoroughly test the printer they are considering using.

NOTE: Prices are per 1,000 tags.

Laser Printable Signs

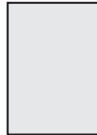
The material is top coated on both sides to provide superior imaging and longevity outdoors. The same material used for Laser Slip-On® is available as sign stock in sizes up to 8-1/2 x 11 and may be printed with decorative frames, borders, logos, etc. Variable information can be printed with the laser printer. TAGGIT® Pro Label Software program now supports laser printers. Utilize your database and print barcodes with confidence. Sold in packages of 100 only! Laser signs can be custom preprinted with border, logo or flood coated.

Valueline Laser Printable Signs

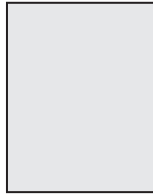
LASER STOCK 7.5 MIL



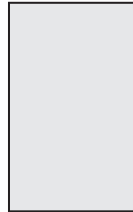
VLC5070B



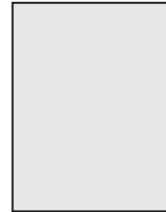
VLC8000B



VLC0711B



VLC1185B



COLOR OPTIONS: WH

ITEM NO.	SIZE	QTY PACK/CASE	WEIGHT/CASE	100	500	1000	2500	5000
VLC5070B	5 x 7	100 / 2000	27 LB	\$0.21	\$0.18	\$0.17	\$0.16	\$0.14
VLC0711B	7 x 11	100 / 1000	30 LB	\$0.40	\$0.35	\$0.32	\$0.30	\$0.28
VLC8000B	8 x 10	100 / 1000	31 LB	\$0.43	\$0.38	\$0.35	\$0.33	\$0.30
VLC1185B	8-1/2 x 11	100 / 500	15 LB	\$0.48	\$0.43	\$0.39	\$0.37	\$0.34

Setup and printing charges will apply -- See page 9 for more information or call your SATO Authorized Master Reseller for quote.

NOTE: Due to the number of laser printers on the market, customers are requested to order a free sample packet to thoroughly test the printer they are considering using.

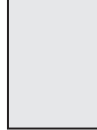
NOTE: Prices are per sign.

Superior Advantage Laser Printable Signs

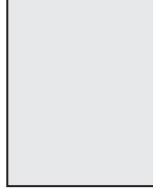
LASER STOCK 10 MIL



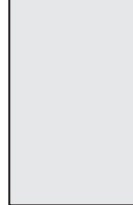
CLC5070B



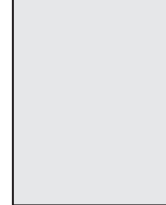
CLC8000B



CLC0711B



CLC1185B



COLOR OPTIONS: WH

ITEM NO.	SIZE	QTY PACK/CASE	WEIGHT/CASE	100	500	1000	2500	5000
CLC5070B	5 x 7	100 / 2000	30 LB	\$0.33	\$0.29	\$0.27	\$0.25	\$0.23
CLC0711B	7 x 11	100 / 1000	31 LB	\$0.64	\$0.56	\$0.52	\$0.49	\$0.45
CLC8000B	8 x 10	100 / 1000	33 LB	\$0.69	\$0.61	\$0.56	\$0.52	\$0.48
CLC1185B	8-1/2 x 11	100 / 500	20 LB	\$0.85	\$0.75	\$0.69	\$0.65	\$0.60

Setup and printing charges will apply -- See page 9 for more information or call your SATO Authorized Master Reseller for quote.

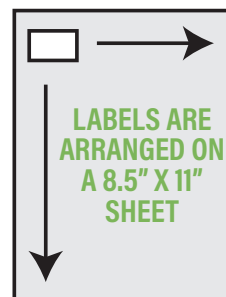
NOTE: Due to the number of laser printers on the market, customers are requested to order a free sample packet to thoroughly test the printer they are considering using.

NOTE: Prices are per sign.

Laser Printable Pressure Sensitive Labels

This high quality material is top coated to provide superior imaging in most desktop color laser printers. It allows the user to print monochrome and color with one product. The adhesive is aggressive and will adhere to most nursery containers. May be printed with decorative frames, borders, logos, etc. Variable information can be printed with the laser printer. TAGGIT® Pro Label Software program now supports laser printers.

Color Laser Pressure Sensitive Labels



COLOR OPTIONS:

WH

ITEM NO.	SIZE	LABELS PER SHEET	TYPE OF PREPRINT	QTY PACK/CASE	WEIGHT/ CASE	1M	5M	10M	20M
1	1-13/16 x 1-1/8	36	F	1M / 20M	27 LB	\$29.13	\$24.47	\$21.56	\$18.35
2	2 x 1	40	F	1M / 20M	27 LB	\$26.00	\$21.84	\$19.24	\$16.38
3	2 1/2 x 1	24	F	1M / 15M	29 LB	\$31.58	\$26.53	\$23.37	\$19.90
4	2-1/2 x 1-1/4	24	F	1M / 15M	28 LB	\$31.58	\$26.53	\$23.37	\$19.90
5	2-21/32 x 1-11/16	18	F	1M / 10M	25 LB	\$58.22	\$48.90	\$43.08	\$36.68
6	3-5/8 x 2-7/16	8	F	1M / 5M	26 LB	\$129.09	\$108.44	\$95.53	\$81.33
7	4 x 3	6	F	1M / 5M	33 LB	\$127.66	\$107.23	\$94.47	\$80.43

ITEM NO.	SIZE	LABELS PER SHEET	TYPE OF PREPRINT	QTY PACK/CASE	WEIGHT/ CASE	1C	5C	10C	25C
8	7 x 5	2	F	1C / 10C	22 LB	\$42.92	\$39.06	\$33.05	\$30.47

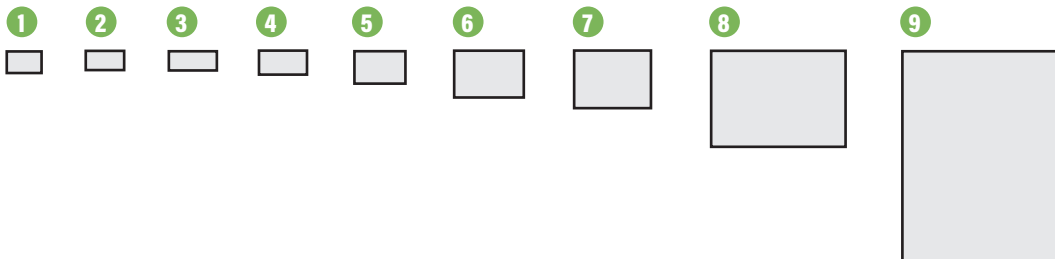
ITEM NO.	SIZE	LABELS PER SHEET	TYPE OF PREPRINT	QTY PACK/CASE	WEIGHT/ CASE	100	500	1000	2500
9	8-1/2 x 11	1	F	100EA / 500EA	20 LB	\$0.64	\$0.54	\$0.47	\$0.40

M = 1,000/C = 100

Setup and printing charges will apply -- See page 9 for more information or call your SATO Authorized Master Reseller for quote.

NOTE: Due to the number of laser printers on the market, customers are requested to order a free sample packet to thoroughly test the printer they are considering using.

NOTE: Prices are per u/m.



4 Color Custom Signs

POLY 8 MIL AND 11 MIL

COLOR OPTIONS: **WH**

SIZE	MATERIAL	QTY PACK	WEIGHT/PACK	500	1000	2500	5000
5 x 4	8mil Poly	50	.50 lb	\$0.53	\$0.39	\$0.31	\$0.28
5 x 4	11mil Poly	50	.75 lb	\$0.59	\$0.44	\$0.37	\$0.33
7 x 5	8mil Poly	50	.90 lb	\$0.71	\$0.57	\$0.48	\$0.45
7 x 5	11mil Poly	50	1.3 lb	\$0.81	\$0.67	\$0.59	\$0.56
11 x 7	8mil Poly	50	2.00 lb	\$1.25	\$1.11	\$1.03	\$1.00
11 x 7	11mil Poly	50	2.85 lb	\$1.47	\$1.33	\$1.25	\$1.21

*Additional art charges may apply.

Custom Signs

POLY 8 MIL AND 11 MIL



Check out SATO's new custom garden signs selection for the very best in weatherproof signage. Whether you are a garden center, botanical garden, arboretum or wholesale nursery, you can use custom signage to build brand awareness, drive product promotions or educate the public. SATO offers endless supplies of plant pictures and custom designs to fit your needs.

Card #1 - PMS 3292

Card #2 - PMS 3292

Card #3 - PMS Relex Blue

Card #4 - PMS 355

Card #5 - PMS 323

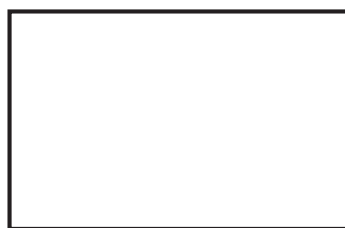
Card #6 - PMS Relex Blue



5" x 4"



7" x 5"



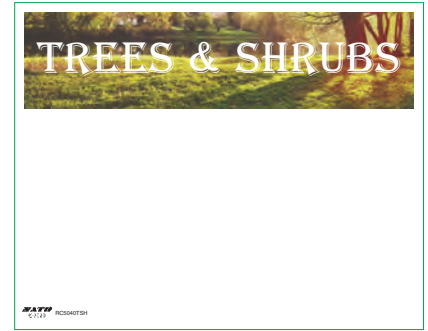
11" x 7"

COLOR OPTIONS: **WH**

SIZE	MATERIAL	QTY PACK	WEIGHT/PACK	500	1000	2500	5000
5 x 4	8mil Poly	50	.50 lb	\$0.45	\$0.35	\$0.28	\$0.25
5 x 4	11mil Poly	50	.75 lb	\$0.50	\$0.40	\$0.33	\$0.31
7 x 5	8mil Poly	50	.90 lb	\$0.60	\$0.52	\$0.44	\$0.41
7 x 5	11mil Poly	50	1.3 lb	\$0.69	\$0.60	\$0.53	\$0.51
11 x 7	8mil Poly	50	2.00 lb	\$1.06	\$1.00	\$0.93	\$0.91
11 x 7	11mil Poly	50	2.85 lb	\$1.25	\$1.21	\$1.13	\$1.11

Stock Signs


RIGID VINYL 15MIL



FLOWERING

Common Name _____
 Botanical Name _____

Water Usage: Low Medium High
 Bloom Time: Spring Summer Fall Winter
 Exposure: Sun Part sun Shade
 Width x Height: _____
 Outstanding Features: Native Attractor Attractor
 Additional Information: _____
 Annual Perennial
 Bloom Color: _____



New
Designs for 2020

TREES & SHRUBS

Common Name _____
 Botanical Name _____

Water Usage: Low Medium High
 Bloom Time: Spring Summer Fall Winter
 Exposure: Sun Part sun Shade
 Type: Deciduous Evergreen
 Width x Height: _____ Berries: _____
 Bloom Color: _____ Fall Foliage: _____





5" x 4"



7" x 5"



11" x 7"

ITEM NO.	SIZE	ORIENTATION	TYPE OF PREPRINT	QTY PACK	WEIGHT/PACK	50	150	550
RC5040*	5 x 4	Horz	4color	25 EA	.40 LB	\$0.31	\$0.29	\$0.27
RC7050*	7 x 5	Horz	4color	25 EA	.65 LB	\$0.41	\$0.39	\$0.36
RC1107*	11 x 7	Horz	4color	25 EA	1.5 LB	\$0.76	\$0.72	\$0.67

*Varieties - Flowering (FLH), Special/Sale (SSH), Trees/Shrubs (TSH)

ITEM NO.	SIZE	ORIENTATION	TYPE OF PREPRINT	QTY PACK	WEIGHT/PACK	50	150	550
RC5040*	5 x 4	Horz	4color	25 EA	.40 LB	\$0.31	\$0.29	\$0.27
RC7050*	7 x 5	Horz	4color	25 EA	.65 LB	\$0.41	\$0.39	\$0.36
RC1107*	11 x 7	Horz	4color	25 EA	1.5 LB	\$0.76	\$0.72	\$0.67

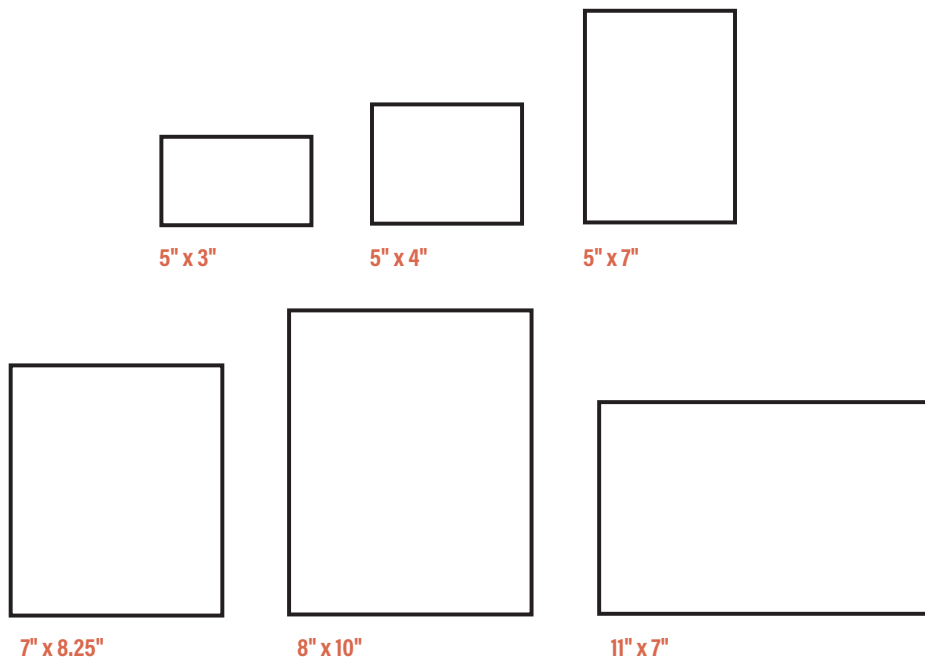
*Varieties with classification - Flowering (FLHC), Trees/Shrubs (TSHC)

Stock signs are prepackaged in bundles of 25.

Stock signs are priced per each.

Blank Signs

RIGID VINYL 15MIL



COLOR OPTIONS: **WH**

50	150	550
\$0.22	\$0.21	\$0.20
\$0.22	\$0.21	\$0.20
\$0.28	\$0.27	\$0.25
\$0.41	\$0.39	\$0.36
\$0.50	\$0.47	\$0.44
\$0.50	\$0.47	\$0.44

COLOR OPTIONS: **YE**

50	150	550
\$0.28	\$0.27	\$0.25
\$0.28	\$0.27	\$0.25
\$0.35	\$0.33	\$0.30
\$0.47	\$0.45	\$0.42
\$0.56	\$0.53	\$0.49
\$0.56	\$0.53	\$0.49

ITEM NO.	SIZE	QTY PACK	WEIGHT/PACK
RC5030B	5 x 3	50	.55 LB
RC5040B	5 x 4	50	.75 LB
RC5070B	5 x 7	50	1.3 LB
RC7082B	7 x 8 1/4	50	2.1 LB
RC8010B	8 x 10	50	2.85 LB
RC1107B	11 x 7	50	2.85 LB

Blank signs are prepackaged in bundles of 50.

Blank signs are priced per each.

Galvanized Sign Holders

These signholders and markers are great for identifying plants and advertising specials. They utilize top-locking bars to hold signs in place. Can be a great way to display signs shown on pages 16, 26, 28, 29, 30, and 31.



ITEM NO.	ORIENTATION	SIZE	STAKE LENGTH	QTY PER CASE	WEIGHT/ PER CASE	25 - 100	150+
FM5040H18	Horz	5 x 4	18"	50	20 LB	\$1.90	\$1.69
FM7050H18	Horz	7 x 5	18"	50	23 LB	\$1.98	\$1.76
FM1107H18	Horz	11 x 7	18"	25	22 LB	\$2.49	\$2.22
FM5040H36	Horz	5 x 4	36"	50	31 LB	\$2.26	\$2.02
FM7050H36	Horz	7 x 5	36"	50	35 LB	\$2.37	\$2.11
FM1107H36	Horz	11 x 7	36"	50	60 LB	\$2.67	\$2.38
FH5040	Face Only	5 x 4		50	8 LB	\$0.67	\$0.59
FH7050	Face Only	7 x 5		50	14 LB	\$0.84	\$0.73
FH1107	Face Only	11 x 7		50	30 LB	\$1.36	\$1.18
FB1010	Base	10 x 10		25	38 LB	\$4.70	\$4.11

Rack Clips



- Applies Quickly
- Holds Tight
- Inexpensive

ITEM NO.	U/M	QTY/PACK	QTY/CASE	WEIGHT/PER CASE	1-4	5-10	11+
RC35	PACK	2,500	25,000	25 LBS	\$49.88	\$35.00	\$27.38

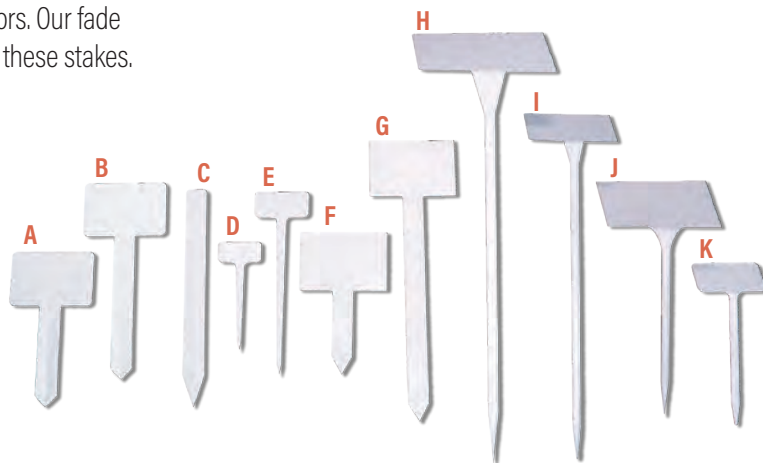
T-Stakes and Injection Molded Stakes

T-Stakes are produced from 30 mil white polystyrene for easy insertion into most soil. They may be purchased blank or preprinted in one or two colors. Our fade resistant pens found on page 34 can be used also to write on these stakes.

Injection Molded Stakes are made of heavy-duty plastic from 55 mil to 70 mil thicknesses. These stakes are sturdy enough to be inserted into most mediums. Surfaces accept writing with fade resistant marking pens. (See pg. 34)

Pressure Sensitive Labels are available for most injection molded stakes.

Please see pages 18 and 19 for appropriate labels.



T-Stakes

COLOR OPTIONS: WH

ITEM NO.	TAG	SIZE	STAKE LENGTH	QTY PACK/CASE	WEIGHT/CASE	1C	10C	50C	100C
HS3370BWH	A	2.5 x 3.75	4.5"	1C / 30C	46 LB	\$17.76	\$14.22	\$12.93	\$11.61
HS3395BWH	B	2.5 x 3.75	6.5"	1C / 20C	40 LB	\$20.52	\$16.41	\$14.94	\$13.70

Minimum order for printed stakes: 1,000 per variety. Call for quote.

Injection Molded Stakes

COLOR OPTIONS: WH

ITEM NO.	TAG	SIZE	STAKE LENGTH	QTY PACK/CASE	WEIGHT/CASE	1C	10C	50C	100C
IN5016WH	C	1 x 9.75		1C / 10C	27 LB	\$29.08	\$19.49	\$18.47	\$16.90
IN5019WH	D	1 x 2	4"	1C / 10C	8 LB	\$18.32	\$12.27	\$11.63	\$10.64
IN5020WH	E	1.25 x 2.50	7"	1C / 10C	17 LB	\$27.74	\$18.58	\$17.61	\$16.12

COLOR OPTIONS: WH

ITEM NO.	TAG	SIZE	STAKE LENGTH	QTY PACK/CASE	WEIGHT/CASE	50 EA	100 EA	500 EA	1000 EA	3000 EA
IN5022WH	F	2.75 x 4	3.75"	50 / 1000	39 LB	\$0.62	\$0.55	\$0.51	\$0.48	\$0.46
IN5021WH	G	2.75 x 4	10"	50 / 500	29 LB	\$0.54	\$0.48	\$0.44	\$0.42	\$0.40

Angled Injection Molded Stakes

COLOR OPTIONS: WH

ITEM NO.	TAG	SIZE	STAKE LENGTH	QTY PACK/CASE	WEIGHT/CASE	50 EA	200 EA	500 EA
IN5500WH	H	6.25 x 3.9375	17.25"	25 / 250	32 LB	\$1.05	\$0.99	\$0.93
IN5400WH	I	4 x 2.5	14"	50 / 500	30 LB	\$0.72	\$0.68	\$0.64
IN5275WH	J	5.188 x 3.188	8.25"	50 / 500	27 LB	\$0.72	\$0.68	\$0.64
IN5190WH	K	3.125 x 2	5.75"	50	2 LB	\$0.50	\$0.47	\$0.44

Available in YE - Yellow and BK - Black, please call your SATO Authorized Reseller for quote.

Blackboard Markers

Our Blackboard Injection Stakes are made of heavy-duty polypropylene. Plants, flats, or groupings can be individualized with waterproof pens in 8 colors, plus gold. Waterproof ink can be erased with isopropyl alcohol, enabling you to reuse them time and again.



COLOR OPTIONS: **BK**

ITEM NO.	SIZE	STAKE LENGTH	QTY PER CASE	WEIGHT PER CASE	100 EA	1000 EA	5000 EA	10000 EA
IN5035BB	5 x 3.15	15"	50	5 LB	\$1.46	\$0.98	\$0.93	\$0.85
IN6240BB	6.3 x 4	20.9"	25	4 LB	\$1.99	\$1.34	\$1.27	\$1.16

Weatherproof Pens

Posterman Basic Pen. A product for marking nursery signs, this pen is waterproof once it dries. For use only with the blackboard injection stakes shown above.

COLOR OPTIONS: **BK**

ITEM NO.	QUANTITY PER BOX	1-9	10+
PMA30B	12 EA	\$3.50	\$3.26

COLOR OPTIONS: **METALIC GOLD**

ITEM NO.	QUANTITY PER BOX	1-9	10+
PMA30MG	12 EA	\$3.50	\$3.26

COLOR OPTIONS: **WH**

ITEM NO.	QUANTITY PER BOX	1-9	10+
PMA30W	12 EA	\$3.50	\$3.26

COLOR OPTIONS: 8 COLORS

ITEM NO.	QUANTITY PER BOX	1-9	10+
PMA308VP	1 PK	\$27.00	\$25.11

PMA308VP



44101

8001

PMA30MG

44161

Allflex Tag Pen

For professional nurserymen and propagators. Two different tips included: broad and fine.

COLOR OPTIONS: **BK**

ITEM NO.	QUANTITY PER BOX	1-9	10+
8001	20 EA	\$5.50	\$5.24

Identi-Pen Double Tip

This pen writes well on all thermal materials (TX, TT, SX, ZX and PX). The 4 pack includes one Black, Blue, Red and Green pens.

COLOR OPTIONS: **BK**

ITEM NO.	QUANTITY PER BOX	
44101	12 EA	\$1.98 EA

COLOR OPTIONS: 4 COLORS

ITEM NO.	QUANTITY PER BOX	
44161	6 PACKS PER BOX	\$8.00 PK

Slip-On® Ties

Slip-On Plant Ties: At 8" long, these ties can be attached together to form longer ties. A soft tie is available for tender plants; a hard tie for more rugged applications.



Slip-On Tree Ties: A heavy-duty, 14.5" long tie with locking fastener; 4" maximum diameter. Available in super-strong hard poly.

COLOR OPTIONS: **BK**

ITEM NO.	SIZE	QTY PACK	WEIGHT/CASE	1M	5M	10M	20M	50M
PS6083X	8"	1M / 30M	1.25 LB / 37 LB	\$13.72	\$12.72	\$12.06	\$11.62	\$11.29
PH6083X	8"	1M / 30M	1.25 LB / 37 LB	\$12.19	\$11.30	\$10.71	\$10.32	\$10.03
PX6047X	14.5"	1M / 8M	5.75 LB / 47 LB	\$62.90	\$58.31	\$55.29	\$53.28	\$51.77

M = 1,000

ID Tags (Permanent Locking)

Randomly numbered on white, yellow, red, orange, and blue material. Tags are 3/8" tall x 7" long and may be imprinted with two lines of text on one side in black only. Print area 1 3/4" L Max.

COLOR OPTIONS: **WH** **BL** **RE** **OR** **YE**

ITEM NO.	SIZE	QTY BAG / CASE	WEIGHT/CASE	100	500	1,000	5,000	10,000
PID	7"	100 EA / 1,000 EA	11 LB	\$0.45 EA	\$0.40 EA	\$0.34 EA	\$0.29 EA	\$0.24 EA
PID* PRINT	7"	100 EA / 1,000 EA	11 LB	\$0.62 EA	\$0.53 EA	\$0.44 EA	\$0.37 EA	\$0.30 EA

*Imprinted 1 Color (please allow 2 weeks) Minimum order of 100 per color.
For consecutive numbering, please call your SATO Authorized Master Reseller for quote.



Rigid Vinyl SOLD Tags

Rigid vinyl (RC) sold tag available in white with red print or red with black print. (Ties not included)

ITEM NO.	COLOR	SIZE	QTY PACK/CASE	WEIGHT/CASE	1C	10C	50C	100C
RC2753RE	Red w/Black Print	2.75 x 5.5625	1C / 30C	28 LB	\$15.10	\$10.57	\$9.66	\$9.21
RC2753WH	White w/Red Print	2.75 x 5.5625	1C / 30C	28 LB	\$15.10	\$10.57	\$9.66	\$9.21

For customized printing call your SATO Authorized Master Reseller for a quote. Sold in pkg. qty. of 100.

C = 100



Slip-On® SOLD Tags

TX Slip-On SOLD Tags are available in red tag with black print.

ITEM NO.	COLOR	SIZE	QTY ROLL/CASE	WEIGHT/CASE	1M
TX1077SRB	Red Tag w/Black Print	.75 x 7	1M / 9M	19 LB	\$34.50

For customized tags, please call your SATO Authorized Master Reseller for quote.

M = 1,000



Handheld Labeling

SATO offers a variety of one and two line Handheld Labeling Systems, ideal for low and high-volume users. They allow you to mark thousands of items quickly and reliably. Used for price marking, mark downs, lot/batch coding and work-in-process the applications are endless. Stock, color and custom preprinted labels are available.



ITEM NO.	DESCRIPTION
WA2010523	PB2-180
WB9002013	Ink Roller - Black
WB9002002	Ink Roller - Red

WAABA1007	KENDO 22.8 Unit-Price Tool
WADBA1006	JUDO 22.16 Tool
WAFBA3016	JUDO 26.20 Tool
WB9011030	Ink Roller - Black
WB9011031	Ink Roller - Red



SATO Kendo, Judo, and PB-2

- Offers a wide variety of print formats
- One and two line handheld labelers
- Label feed slots ensure positive registration
- Print band options for all types of applications
- Reliable and versatile handheld labeling solutions



Ringer and Rings

The ringer has revolutionized the auto-ringer market with its "pneumatic-like" action and ease of use. From balling and burlapping, to tagging of pots, this tool puts affordability with quality. The "D" shaped ring creates a triangle "△" when attached.

G7 Auto Ringer and Rings

The application of the self-feeding principle to the familiar hog ring plier meets a need that all users of this fastening method have been waiting for. The auto ringer cuts operating time and costs, and increases savings and profits. A very useful tool on every job within the range of this staple size. The SR8GPL rings for the G7PL are galvanized. The "C" shaped ring creates a circle "○" when attached.



ITEM NO.	DESCRIPTION	SIZE	QTY PACK	WEIGHT/CASE	1-4	5-9	10-19	20+
515DG50	Hog Ring 15GA	9/16"	2500	2.9 LB	\$28.54	\$27.11	\$24.26	\$22.83
RINGER	Pliers	9/16"	1	1.3 LB	\$108.12	\$99.15	\$96.38	\$92.88
SR8GPL	Hog Ring 16GA	11/16"	2500	2.3 LB	\$19.33	\$13.76	\$12.49	\$11.73
G7PL	Pliers	11/16"	1	.8 LB	\$61.15	\$56.07	\$50.94	\$47.88

Custom Solutions

Take charge of your tag, pot stake, and labeling needs. Choose from the diverse array of horticulture solutions offered by SATO. Designed to enhance the customer purchasing experience, we offer an extensive library of eye-catching designs and the versatility of many product branding and identification options.

Custom Marketing & POP Material

The Horticulture division of SATO America develops solutions that solve challenges and help customers increase sales.

Custom marketing programs tailored for your specific products combine container labels, custom design tags and point-of-purchase (POP) materials to achieve merchandising strategies aimed at generating turns.



Combo Printing

HANGTAG COMBO SIZES



- D249B**
2.75" x 5"
.1875" Punch hole
strung or unstrung
- D133**
3" x 6"
.1875" Punch hole
strung or unstrung
- D74**
2.5" x 4.25"
.1875" Punch hole
strung or unstrung
- D82**
3.25" x 5.125"
.1875" Punch hole
strung or unstrung

POT STAKE COMBO SIZES



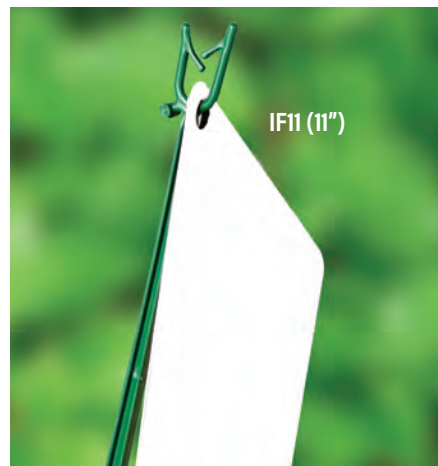
- D19**
1.875" x 5.75"
- D230**
2" x 6.25"

**COMBINE WITH
OTHER PRINT
RUNS TO TAKE
ADVANTAGE OF
BIG SAVINGS!**

**ASK ABOUT
CURRENT
COMBOS**

Info Sticks

Easily display your custom hang tags with Info Sticks. Sold in box quantity increments.



ITEM NO.	SIZE	QTY / CASE	WEIGHT / CASE	1M
IF11	11"	5000	39 LB	\$48.36

M = 1,000

Pressure-sensitive labels, tickets, and tags

- Full range of paper, film, and adhesive options
- Up to 7 colors including 4-color process
- Full color Digital UV print
- Digital color management system
- Spot and full coverage water and UV varnish
- Full and pattern adhesive coating
- Inline lamination and Integrated Forms
- Tamper-evident labels
- Inline variable data printing
- In-house prepress and art departments
- Packaged in rolls, fan-fold, sheets, or stacks



Simply SATO

Economical tags that offer the combination of variably imprinted information with preprinted graphics and custom branding.

Simply SATO - 2" x 4" Hang Tags (Thermal Imprintable)

ITEM NO.	VARIETY	CARE INSTRUCTIONS - BACK	SIZE	QTY PER ROLL / CASE	WEIGHT/CASE	8M
PT2040TFLA	Floral	Arrangement	2 x 4	2M / 8M	23 LB	\$27.00
PT2040TFLA2	Floral 2	Arrangement	2 x 4	2M / 8M	23 LB	\$27.00
PT2040TORA	Orchid	Orchids	2 x 4	2M / 8M	23 LB	\$27.00
PT2040TCHA	Christmas	Arrangement	2 x 4	2M / 8M	23 LB	\$27.00
PT2040TVLA2	Valentine's	Arrangement	2 x 4	2M / 8M	23 LB	\$27.00

Call your SATO Authorized Master Reseller for additional available designs.

M = 1,000



Tree Wraps - Custom

Custom printed tree wraps, 10" x 12" and 10" x 18". Printed up to three colors featuring your company logo, care information, and planting instructions. Just wrap and staple, no messy glue strips to contend with.



Grow with the Four Seasons of SATO



PLANT	SEASON
Bare-Root Roses	Early Winter
Berried Hollies	Winter
Hellebores	Winter
Shrubby Honeysuckles	Winter
Mahonias	Winter
Wintersweet	Winter
Winter Pansies	Winter
Crocuses	Winter
Tuberous Begonias	Late Winter
Busy Lizzies	Late Winter
Sweat Peas	Late Winter
Lilies	Early Spring
Onions	Early Spring
Celery	Early Spring
Dahlias	Spring
Cannas	Spring
Crown Imperials	Spring
Aquilegia Vulgaris	Spring
Perennials	Spring
Shrubs	Spring
Basil	Spring
Tomato	Spring
Broccoli	Spring
Melon	Spring

PLANT	SEASON
Corn	Spring
Kale	Spring
Cabbage	Spring
Peas	Spring
Annuals	Early Summer
Pelargoniums	Early Summer
Lobelia	Early Summer
Stocks	Early Summer
Petunias	Early Summer
Verbena	Early Summer
Fuchsias	Early Summer
Begonias	Early Summer
Cucumber	Early Summer
Pumpkin	Early Summer
Peppers	Early Summer
Daffodils	Autumn
Snowdrops	Autumn
Alliums	Autumn
Container-Grown Trees	Autumn
Shrubs	Autumn
Climbers	Autumn
Roses	Autumn
Tulips	Late Autumn
Bare-Root Plants	Late Autumn

The Economy – A SATO Brand Story

Before 1953, “state-of-the-art” plant identification was a white plastic stake and a magic marker. Then along came Economy Label Sales – inventor of the Slip-On® tag. While the technology awed and amazed, decades later it became even more impressive when Economy introduced thermal printed plant tags, a process which truly transformed the landscape of horticulture marketing.



Meanwhile in Japan, Yo Sato, who established SATO in 1940 to manufacture and sell packaging machinery, was developing his own innovative technologies including one of the first hand labelers in 1962 and the world's first thermal transfer label printer in 1979. Today, SATO America manufactures innovative, reliable auto-identification systems and offers complete solutions to businesses by integrating hardware, software, media supplies and maintenance services.

From the beginning, both companies were on parallel paths to leadership in their respective industries: Economy in horticulture and SATO in printing solutions.

Over the years, tagging and labeling has grown to critical proportion for horticulture production and marketing requirements. Today, tracking, shipping, merchandising, marketing and the transactional accounting of plant material are synonymous with profitability.

So, it seems only natural that two industry leaders would come together under the Horticultural Division of SATO America, LLC.

And the rest is history. Economy Labels & Tags – a SATO Brand – specializes in developing and perfecting the solutions that help retailers and growers to flourish, including but not limited to:

- Slip-On® Tags, Pot Tags, Labels, Signage
- Affordable Thermal Printers and Software
- And much more

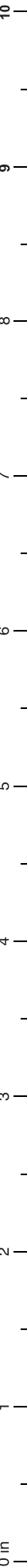
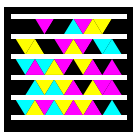
Need a QR code or a MS Tag? We can help.

QR Code is a matrix barcode (or two-dimensional code), readable by QR scanners, mobile phones with a camera, and smartphones. The code consists of black modules arranged in a square pattern on white background. The information encoded can be text, URL or other data. Codes can be customized to link to any page on your website.



MS Tag or Microsoft Tag is an implementation of HCCB using 4 colors in a 5 x 10 grid. Additionally, the code works in monochrome. The print size can be varied to allow reasonable reading by a mobile cameraphone; for example, a Tag on a real estate sign might be printed large enough to be read from a car driving by, whereas a Tag in a magazine could be smaller because the reader would likely be nearer.

A Microsoft Tag is essentially a machine readable web link, analogous to a URL shortening link: when read, the Tag application sends the HCCB data to a Microsoft server, which then returns the publisher's intended URL. The Tag reader then directs the user's mobile browser to the appropriate website, not unlike how CueCat operated. Because of this redirection, Microsoft is also able to provide Tag analytics to publishers.



Texpak, Inc

130 New Hyde Park Rd
Franklin Square, NY 11010
(800) 645-3416 or
(516) 326-7720
Fax (516) 326-7970
info@texpak.com
www.texpak.com



PRESORT STD
US POSTAGE
PAID
Permit No.70
HICKSVILLE NY

